

SOFTWARE MANUAL



THE INCREDIBLE BOOTH INSTALLATION MANUAL

STANDARD ADDITION

PREPARED BY: THE INCREDIBLE BOOTH

Page 1 of 45

CONTENTS

SECTION 1: Introduction

- Page 3; 1.1 Overview.
- Page 3; 1.2 Disclaimers.

SECTION 2: Installation Procedure

- Page 4; 2.1 Overview.
- Page 4; 2.2 Host computer preparation. (Resolutions)
- Page 5; 2.3 Adjusting the host computer screen resolutions.
- Page 5; 2.4 Installation of "THE INCREDIBLE BOOTH"
- Page 5; 2.4.1 How to transfer "THE INCREDIBLE BOOTH" software to the host computer.
- Page 6; 2.4.2 How to install The "THE INCREDIBLE BOOTH" set up file.
- Page 6; 2.5 Installation of the DNP-DS RX1 printer driver.
- Page 7; 2.6 Installation of "BREEZE SYSTEMS" DSLR Remote Pro v3.6.1.

SECTION 3: "BREEZE SYSTEMS" DSLR REMOTE PRO v3.6.1 Configuration And Integration.

- Page 8; 3.1 Overview.
- Page 8; 3.2 Configuration of the basic camera settings.
- Page 9; 3.3 Configuration of advanced settings.
- Page 10; 3.4 Configuration of "Breeze Systems" user preferences.
- Page 10; 3.5 Checking print configurations within Breeze Systems DSLR Remote Pro v3.6.1 (DNP-DS RX1 only.)

SECTION 4: "THE INCREDIBLE BOOTH" Printer Driver Re-configuration.

- Page 11; 4.1 Overview.
- Page 12; 4.2 Explanation of printer driver configuration.
- Page 12; 4.3 Instruction for the re-configuration of printer driver. (Step by Step Guide)

SECTION 5: "THE INCREDIBLE BOOTH" Operations Manual.

- Page 26; 5.1 Overview.
- Page 26; 5.2 Basic controls and functions.
- Page 29; 5.3 Captions and comments.
- Page 29; 5.4 Reprints, instant reprints and reformatting.

SECTION 6: Uninstalling,

- Page 31; 6.1 Un-installation of "THE INCREDIBLE BOOTH" software.

SECTION 1:

1.1 Overview.

Thank you for purchase of "**The Incredible Booth**", the ultimate green screen software. "THE INCREDIBLE BOOTH" has been designed and developed to work seamlessly with "Breeze Systems" DSLR Remote Pro v3.6.1 only. This document has been constructed to outline the correct installation procedure and provide the correct information required to ensure the correct operation of "The Incredible Booth". Please ensure you read and fully understand this document prior to installing "THE INCREDIBLE BOOTH". If you have any questions relating to the operation and installation of "Breeze Systems" DSLR Remote Pro v 3.6.1 then please consult the "Breeze Systems" DSLR Remote Pro user manual which has been included within this software package for your convenience and attention.

1.2 DISCLAIMER.

This document explains the correct installation procedure and information required to ensure the correct operation of "**The Incredible Booth**" software. Please ensure you read and fully understand this document prior to installation. In the event that you require further advice and guidance relating to the installation of "**The Incredible Booth**" software, please contact "**The Incredible Booth**" technical support team for guidance prior to installation. "**The Incredible Booth**" cannot be held responsible for the actions taken upon yourself that may not be in accordance with this manual and that may lead to irreversible results during installation. If you are in any **doubt?** Please contact our technical support team via the following,

Technical support help line.

Tel: 0044 (0) 2392 473914

Support via the Internet

The technical support enquiry form can be utilised for all enquiries and is found on our website at;
www.theincrediblebooth.com

Technical support via Email.

Please forward all enquires to, Info@theincrediblebooth.com

"THE INCREDIBLE BOOTH" software has been designed and developed **to work in seamlessly** with "Breeze Systems" DSLR Remote Pro v3.6.1 only. Correct operation cannot be guaranteed or recommended on any past or future releases of "Breeze Systems" DSLR Remote Pro unless stated and warranted in writing by "THE INCREDIBLE BOOTH"

The "Breeze Systems" DSLR Remote Pro v3.6.1 installers, manual and license agreement have been included within this software package to aid you in the correct installation and operation of "Breeze Systems" DSLR Remote Pro v3.6.1 software, however "**The Incredible Booth**" stress that it is your sole responsibility to ensure the correct installation, lawful activation and registration of "Breeze Systems" DSLR Remote Pro v3.6.1 in accordance with the "Breeze Systems" terms and conditions.

COPYRIGHTS & TRADEMARKS

Copyrights, trademarks or any other intellectual property rights **whatsoever** that pertain to documents, programs or other items provided with this product are the property of **The Incredible Booth** which is a trading division of I.C.G Visual Imaging Ltd. Except in cases permitted by applicable laws, these may not be duplicated or used without consent from **The Incredible Booth** or I.C.G Visual Imaging Ltd.

SECTION 2: Installation And Integration Procedure.

2.1 Overview.

Section 2 is split up into 5 sections. These sections will outline the correct installation procedure of all the programs and drivers required to ensure the correct installation and operation of "THE INCREDIBLE BOOTH" software. Ensure you have read and fully understood all sections of this document prior to the installation of "THE INCREDIBLE BOOTH". If you have any questions, please contact our technical team prior to installation.

2.2 Host Computer Preparation.

In order to ensure the correct operation of "THE INCREDIBLE BOOTH", it is vital to remove all potential conflicts from your host computer that may cause problems during or after the installation of "THE INCREDIBLE BOOTH" software.

Previous releases of "Breeze Systems" DSLR REMOTE PRO

In the event that previous releases of the "Breeze Systems" **DSLR REMOTE PRO** are installed on the host computer, it is essential to de-activate and uninstall these releases in line with the recommendations specified by "Breeze Systems". These recommendations can be found in the "Breeze Systems" **DSLR REMOTE PRO** user manual, under "Deactivation and uninstalling **DSLR REMOTE PRO**".

For "THE INCREDIBLE BOOTH" software to function correctly it is required that a valid version of "Breeze Systems" DSLR Remote Pro v3.6.1 is installed on the host computer. For your convenience, we have included the correct installer and user manual relating to "Breeze Systems" DSLR Remote Pro v3.6.1 as part of "THE INCREDIBLE BOOTH" software package. Once installed, "Breeze Systems" DSLR Remote Pro v3.6.1 can be activated using your current "Breeze Systems" DSLR Remote Pro license. It maybe necessary to purchase an upgrade for your current license or purchase a new license should you not have a valid license to enable the lawful use of "Breeze Systems" DSLR Remote Pro v3.6.1.

Old Print Drivers

It is recommended that the latest manufacturers print drivers are installed on your host **machine**. If you have any previous, unused printer drivers installed on your host computer, it is recommended that these are removed from your system prior to the installation of "THE INCREDIBLE BOOTH". Once complete, restart the host computer.

How To Do This:

- From the "Start" menu select the tag "Devices and Printers" (Windows 7) or the tag "Settings" (Windows 8/10).
- (Windows 8/10 only) Select "Devices" from this menu.
- (Windows 7) Right click on the **P**rinter icon relating to the unwanted device and select "Remove Device" from the popup menu.
- (Windows 8/10) Click the Printer icon relating to the unwanted device and select "Remove Device"
- Confirm the request to remove.
- Restart your host computer.

2.3 Adjusting The Host Computers Screen Resolution To 1920 x 1080.

To ensure "THE INCREDIBLE BOOTH" graphics and operation functions perform correctly once installed, it may be necessary for you to adjust your host computers display settings to meet the following criteria, 1920 x1080 pix

How To Do This:

Windows 7.

- Right click on the desktop and select "Screen Resolution" and ensure that the resolution is set to 1920 x 1080.
- Click on the following tag "Make text and other items larger or smaller" and ensure that "smaller 100%" is selected.
- Click "Apply". It be necessary to "Log off" and sign back in to windows to apply these settings. Click "Log Off Now" and then log back in to apply the settings.

Windows 10.

- Right click on the desktop and select "Display Settings". Ensure that the slider beneath the tag line "change the size of text, apps and other items" is set to 100%. If not, then adjusted the slider to meet these criteria and then click "Apply"
- Click on the tag "Advanced Display Settings" and ensure that the screen resolution is set to 1920 x 1080. If not adjust to suit. Click "Apply" then "Keep Changes" and close the settings window.
- Click "Apply". It be necessary to "Log off" and sign back in to windows to apply these settings. Click "Log Off Now" and then log back in to apply the settings.

Section 2.4 Installation Of Printer Drivers. (If Applicable)

Currently every version of "THE INCREDIBLE BOOTH" software is supplied pre-configured for use with either the DNP DS-RX1 or the Mitsubishi CP-D70DW dye sublimation photo printer and subsequently is supplied with the appropriate printer drivers.

Note: A re-configuration of "The Incredible Booth" software maybe still required in some circumstances when using either of these 2 printers due to variables in the windows operating system.

"THE INCREDIBLE BOOTH" software will also operate correctly when in conjunction with alternative photo printers. The subject of re-configuration for alternative printers is addressed in far more depth in Section 4. If you intend to re-configure "THE INCREDIBLE BOOTH" software with an approved alternative printer please ensure that you install the correct printer driver now for your chosen device and then proceed Section 2.5.

IMPORTANT!

ENSURE THE PRINTER IS TURNED OFF DURING THE INSTALLATION OF THE PRINTER DRIVER.

Supplied alongside "THE INCREDIBLE BOOTH" software is the required printer drivers to ensure correct operation. This printer driver is supplied on "THE INCREDIBLE BOOTH" Usb for your convenience and can be easily accessed by plugging "THE INCREDIBLE BOOTH" Usb into the host computer. Ensuring that all the documentaton relating to the installation of the printer driver has been read and understood, install the driver in accordance to the documentaion. Remember DO NOT connect the printer or turn it on prior to, or during the driver installation. Once installation of the printer driver is complete, connect the Usb cable and turn the printer on. Windows will now install the printer device to the host computer.

After the installation process is complete and the host computer has to be restarted. Ensure that the printer is set as the host computers "Default Printer".

How To Do This:

- From the start menu select the tag "Devices and Printers" (Windows 7) or the tag "Settings" (Windows 8/10).
- (Windows 8/10 only) Select "Devices" from this menu.
- (Windows 7) Right click on the printer icon and select "Set As Default Printer".
- (Windows 8/10) Select the printer icon with a single click and select "Set As Default Printer".
- A small tick or section of text by the printer icon will confirm this request.

A FULL RESTART OF THE HOST COMPUTER IS REQUIRED AFTER INSTALLATION OF THE PRINTER DRIVER.

Section 2.5 Installation Of "Breeze Systems" DSLR Remote Pro v 3.6.1.

The installation tool for "Breeze Systems" DSLR Remote Pro v3.6.1 has been supplied for your convenience on "The Incredible Booth" USB flash drive. This installation tool will ensure the correct version of "Breeze Systems" required for the correct operation of "The Incredible Booth" is installed to the host computer.

Prior to proceeding with the installation process of "Breeze Systems" DSLR Remote Pro v3.6.1, it is requested that fully understanding of all documentation regarding the installation is reached whilst ensuring full acceptance of the "Breeze Systems" end user license agreement. If a disagreement is reached within the end user license agreement the installation procedure should be aborted immediately. "Breeze Systems" support can be reached by emailing support@breezesys.com and gaining further assistance on the matter and clarification of the concern.

Providing fully understand and agreement with all documentation relating to the installation and licensing of "Breeze Systems" DSLR REMOTE PRO v3.6.1 has been reached, proceed with the installation.

A FULL RESTART OF THE HOST COMPUTER IS REQUIRED AFTER INSTALLATION OF THE "BREEZE SYSTEMS" DSLR REMOTE PRO v3.6.1.

2.6 Installation Of "THE INCREDIBLE BOOTH" Software

Disclaimer : Prior to proceeding through the installation process, it is requested that full understanding of all documentation is obtained regarding the installation, whilst ensuring total agreement with "THE INCREDIBLE BOOTH" end user license agreement. If at any point a disagreement is reached whilst reading the end user license agreement, the installation procedure could be aborted immediately. "THE INCREDIBLE BOOTH" customer service team can be contacted by emailing info@theincrediblebooth.com to gain further assistance and clarification of the concern.

INTERNET CONNECTION REQUIRED FOR INSTALLATION AND ACTIVATION!

Installation: The Installation of "THE INCREDIBLE BOOTH" software is a simple.

Ensure "The Incredible Booth" Usb is inserted correctly to the Host Computer. Open the host computers "Start" menu and select "Computer" or "File Explorer" from the start menu and open "THE INCREDIBLE BOOTH" USB from the side menu. Once open, double click on the file named "INSTALL". It may be necessary to provide permission to allow the application to open! Click "Yes" to continue or "Cancel" to abort the installation. Providing "Yes" was selected "THE INCREDIBLE BOOTH" installation program will now appear.

As part of the installation procedure it will be necessary to enter a unique license key code. The host computer must be connected to the internet to activate the "THE INCREDIBLE BOOTH" software. Beneath the foam of "THE INCREDIBLE BOOTH" packaging you will find the unique license key code which is specific to your software. An addition copy of this code has been entered into a text document on "THE INCREDIBLE BOOTH" Usb drive. This is to enable the electronic copying of the code so it can be pasted into the license key code field entry box within the installer. This unique license key code is a single use, non transferable license code and will be active once your software is activated on your host computer.

During the installation procedure "THE INCREDIBLE BOOTH" installer will install all the necessary files, fonts and folders in the specific locations required to ensure the correct operation of "THE INCREDIBLE BOOTH" software. The installer will show a prompt of completion once installation is complete.

A full restart of the host computer is required after installation of "THE INCREDIBLE BOOTH" software.

Please ensure you are connected to the internet. You will not be able to proceed with the installation offline.

The installation process of "THE INCREDIBLE BOOTH" will take approximately 20 mins.

End Of Section

SECTION 3: "BREEZE SYSTEMS" DSLR REMOTE PRO v3.6.1 Configuration

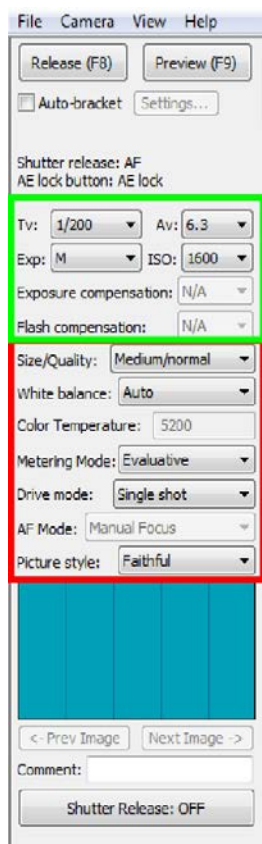
And Integration.

3.1 Overview.

This section focuses on 3 different sets of settings within "Breeze Systems" DSLR Remote Pro v3.6.1 and will outline the correct configuration and recommendations of these settings to ensure the correct operation of "THE INCREDIBLE BOOTH". Providing the installation procedure of "Breeze Systems" DSLR REMOTE PRO v3.6.1 has been adhered to, a fully installed and registered version of "Breeze Systems" DSLR Remote Pro v3.6.1 should now be installed on your host computer.

3.2 The Basic Settings.

With the camera connected to the host computer open the newly installed "Breeze Systems" DSLR REMOTE PRO v3.6.1 software via the icon on the desktop. "Breeze Systems" DSLR REMOTE PRO v3.6.1 should automatically connect to the camera, however in the event that the camera fails to connect with "Breeze Systems", click on tab "camera" in the top left hand corner and then select "Connect to Camera" at the bottom of the menu, you may also wish to select "Auto Reconnect" and "Save To PC Only" from this menu at this point.



The following information below relates to the "Basic Camera Settings" and as with every photo booth in any environment these basic settings will be unique, these settings must be treated as a starting point only and then fine-tuned to your individual requirements.

The values in the GREEN box are specific to the individual lighting conditions, camera, and type of photo booth present. These settings will need to be amended to ensure correct exposure is achieved within the individual application. It is however recommended not running the "ISO" higher than 1600 due to the introduction of digital noise which is created when using high ISO settings.

The settings in the RED box directly relate to lighting and how the camera will operate. It is recommended that the "Size/Quality" setting is set to "Medium/Normal". This setting can be increased to improve photo quality if required, however this will have a detrimental effect on processing time and file size at the end of each photo booth shooting session.

"White Balance" set this value according to the type of lighting being used in the photo booth.

"Metering Mode" Set by preference based on the requirements of the photo booth.

"Drive Mode" set to "Single Shot".

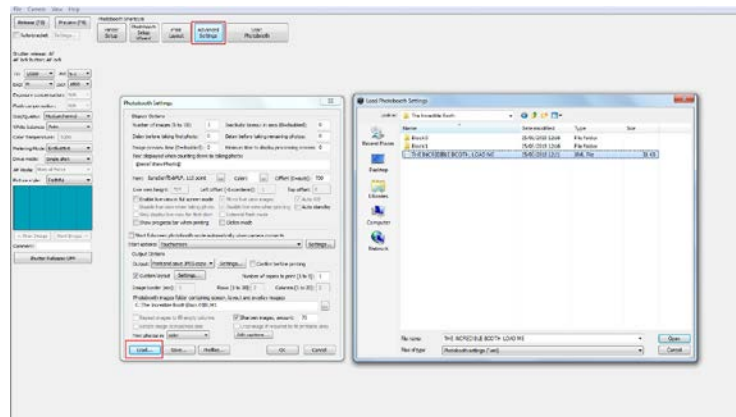
"AF Mode" can be set by preference based on the individual requirements of the photo booth. It is however recommended that "Manual Focus" is used to ensure consistency.

"Picture Style" is set to "Neutral" or "Faithful". This will ensure the camera will not automatically alter the photo with increased brightness or contrast etc.

NOTE: All print layouts within "THE INCREDIBLE BOOTH" are configured in a landscape format. Ensure the camera is mounted in a landscape orientation and additionally check that the "Landscape" option is checked. This option can be found within the "view" menu tag of "Breeze Systems" DSLR Remote Pro v3.6.1.

Section 3.3 Configuration Of "Breeze Systems" Advanced Settings.

With the "Breeze Systems" DSLR Remote Pro v3.6.1 "Home Screen" open, click on the tab "Advanced Settings" and then click "Load". Using the "Load Photobooth Settings" navigation browser, navigate to "THE INCREDIBLE BOOTH" folder in the C: drive directory of the host computer. Open "THE INCREDIBLE BOOTH" folder and click on the .XML file entitled "The Incredible Booth, Load Me". Now click "Open"



The "Load Photobooth Settings" dialog box will now close. "The Incredible Booth, Load Me" file has now been loaded in to "Breeze Systems" DSLR Remote Pro v3.6.1. With the "Advanced Settings" window still open, click on the tab at the bottom entitled "Profiles", the "Photobooth Profiles" dialog box will now open. The "Photobooth Profiles" dialog box will present you with 18 text field directory boxes. In the first of these directory boxes entitled "Profile 1" enter the following text exactly as it appears here, paying special attention to the capital "D".

{photoboothDir}\profile1.xml

Once you have entered the above text exactly as it is shown, continue with the remaining 17 directories however paying attention to number each text entry box according to the "Profile".

For Example, Enter:

{photoboothDir}\profile1.xml In "Profile 1" Directory box.

{photoboothDir}\profile2.xml In "Profile 2" Directory box.

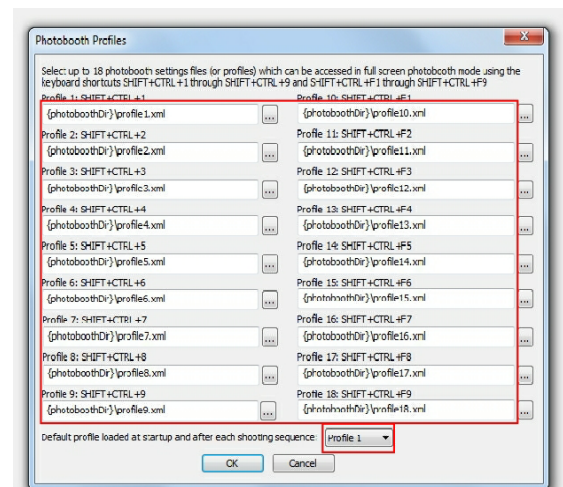
{photoboothDir}\profile3.xml In "Profile 3" Directory box.

{photoboothDir}\profile4.xml In "Profile 4" Directory box.

{photoboothDir}\profile5.xml In "Profile 5" Directory box.

{photoboothDir}\profile6.xml In "Profile 6" Directory box.

{photoboothDir}\profile7.xml In "Profile 7" Directory box.



Continue in this manor until all 18 "Profiles" have been completed.

Ensure that the box entitled "Default profile loaded at startup and after each shooting sequence" is set to "**Profile 1**". Once the above criteria has been meet, click "Ok" and then again click "Ok" in the "Advance Settings" to close the dialog box.

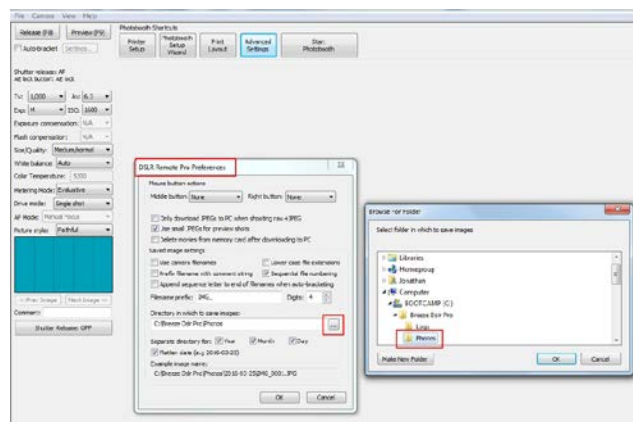
Note: It is not necessary to save these settings, "Breeze Systems" DSLR Remote Pro v3.6.1 automatically saves the settings entered once the "Ok" button is pressed. If "Cancel" is selected, nothing is saved.

Section 3.4 Configuration Of "Breeze Systems" User "Preferences".

With the "Breeze Systems" DSLR Remote Pro v3.6.1 "Home Screen" open, click on the "File" tab in the top left hand corner. At the bottom of this "File" menu, click "Preferences". With the "DSLR Remote Pro Preferences" dialog box open in front of you, click on the "button" to the right of the text entry box entitled "Directory in which to save images". Use the navigation browser to navigate to the "**Breeze Dslr Pro**" folder which was installed in the C: drive directory on the host computer during the installation of "**The Incredible Booth**". Once located, double click and open the "**Breeze Dslr Pro**" folder and then highlight the folder entitled "Photos" with a single click. Ensuring the "Photos" folder is highlighted click "Ok" in the dialog box to close.

At this point you may like to amend other settings related to the "Saved Image Settings". If this is the case, then adjust the settings now and then click "Ok". Otherwise just click "Ok" in the "**DSLR REMOTE Pro Preferences**" Dialog box to close the window.

Note: It is not necessary to save these settings, "Breeze Systems" DSLR Remote Pro v3.6.1 automatically saves the settings entered once the "Ok" button is pressed. If "Cancel" is selected nothing is saved.



Section 3.5 Checking Print Configurations Within Breeze Systems DSLR Remote Pro v3.6.1

(DNP-DS RX1 & Mitsubishi CP-D70DW Users Only). All Alternative Printers Will Require Re-configuration.

Prior to the reconfiguration of "THE INCREDIBLE BOOTH" it is necessary to check if a **reconfiguration** of the print **driver required**. With "Breeze Systems" DSLR Remote Pro v3.6.1 open and your printer connected and switched on, click on the "Advanced Settings" tab at the top of the screen. Use the "Load" button in the "Advanced Settings" to open the "Load Photobooth Settings" browser and then use the browser to navigate to "The Incredible Booth" folder located in the C: drive. Open "The Incredible Booth" folder and then locate and open the folder entitled "Printer Config"

Using "Breeze Systems" DSLR Remote Pro v3.6.1, load each xml file entitled "Landscape", "Portrait" and "Strips" in turn, and view the print preview using the "Print Layout" tab in "Advanced Settings" to view a representation of the print layout. In the event that the print preview appears correct, it is then recommended to check the "Printer Setup" and "Advanced" printer settings to ensure correct printer configuration also. Providing that everything is pre-configured and correct, click on the "Print Test Page" tab on the left hand side of the screen and ensure your printer reproduces the relevant print format seen on the screen. Ensure that this process is repeated for each individual .XML file in the Printer Config folder.

In the event that the print preview, printer configuration, paper sizes appear incorrect or additionally that the printer does not print, a reconfiguration of the printer driver must be carried out as detailed in Section 4.

SECTION 4: "THE INCREDIBLE BOOTH" Printer Driver Re-Configuration.

IMPORTANT!

DO NOT RUN THE "CHANGE PRINTER" APPLICATION UNTILL SECTION 4 IS COMPLETE

TOTAL UNDERSTANDING AND EXTREME CARE MUST BE TAKEN PRIOR TO INITIATING ANY CHANGES WITH THE "CHANGE PRINTER" APPLICATION. IF IN DOUBT AFTER READING THE FOLLOWING INSTRUCTION, CONTACT THE TECHNICAL SUPPORT TEAM VIA EMAIL OR OVER PHONE FOR FURTHER ASSISTANCE PRIOR TO RUNNING THE APPLICATION.

4.1 Overview.

Currently every version of "THE INCREDIBLE BOOTH" software is supplied pre-configured for use with the DNP DS-RX1 or Mitsubishi CP-D70DW dye sublimation photo printer and subsequently is supplied with the appropriate driver. Although every effort has been made to ensure compatibility with these printers across all Windows 7, 8, 8.1 and 10 platforms, it unfortunately does not guaranty initial compatibility with every machine on the market. However, following the instructions below and utilizing the printer re-configuration program will ensure full compatibility within a matter of minutes.

Prior to the re-configuration of "THEINCREDIBLE BOOTH" software it is of upmost importance to ensure that the correct printer driver is installed to the host computer. Ensure that the USB cable is connected to the correct USB port and that the printer driver is set for 6x4 media in a Landscape orientation and is operating correctly.

Correct installation of the printer driver should be checked and confirmed by running several "Test Prints" from the printer properties menu. This can be accessed through the "Devices and Printers" section of the Microsoft Windows control panel. As mentioned above it is possible to re-configure the printer driver settings within "THE INCREDIBLE BOOTH" software meaning it is possible to reconfigure the "THE INCREDIBLE BOOTH" software to work correctly on several alternative printers providing the printers 'printed area' is 1844 x 1240 pixel or 1864 x 1228 pixel.

Note: Contact us on 0044 (0) 2392 473914 or Email us at info@theincrediblebooth.com for guidance and advise on the subject of reconfiguration if for any reason you do not understand or feel the following instruction is beyond your full understanding.

Section 4.2 Explanation Of Printer Driver Configuration.

As part of the installation procedure in section 2.6, a folder entitled "**The Incredible Booth**" was created within the C:\Program Files (x86) folder. Located within "C:\Program Files\The Incredible Booth" is a folder entitled "Change Printer" which houses a small application and 3 XML files designed to re-configure "THE INCREDIBLE BOOTH" printer settings.

The 3 XML files in the "Change Printer" folder are named as follows. "Landscape", "Portrait" and "Strips". Currently in thier unmodified state, each XML matches the respective print format within 'THEINCREDIBLE BOOTH' software, meaning that if you were to run the "Change Printer" application at this point, nothing would change.

Section 4.3 Instruction For The Re-Configuration Of The Printer Driver.

Important!

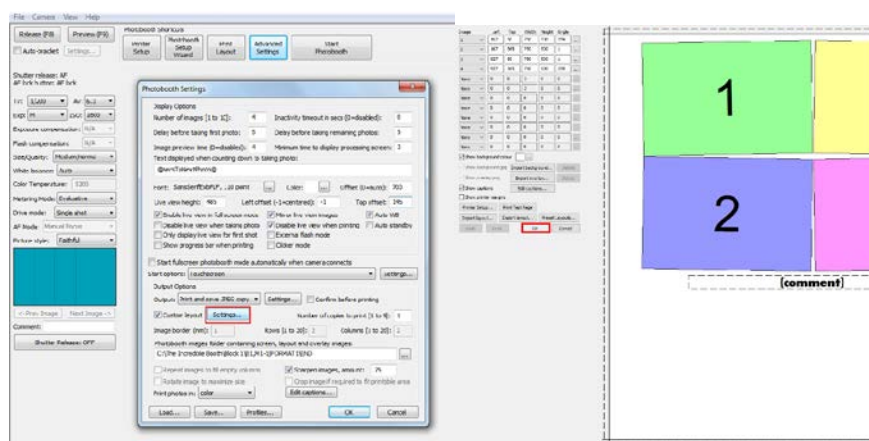
TOTAL UNDERSTANDING OF THIS INSTRUCTION AND EXTREME CARE MUST BE TAKEN PRIOR TO INITATING ANY CHANGES WITH THE "CHANGE PRINTER" APPLICATION. IF YOU ARE IN ANY DOUBT AFTER READING THE FOLLOWING INSTRUCTION, CONTACT THE TECHNICAL SUPPORT TEAM FOR FURTHER ASSISTANCE.

To ensure the simplest method of instruction, the following instruction has been presenented in a 'step' by 'step' format. The information **descriibed** and images show are relevant to a DNP-DS RX1 printer driver dialog. In the event that you are reconfiguring for an alternative printer these instructions may differ slightly.

Step 1. If open, close "**Breeze Systems**" DSLR Remote Pro v3.6.1 and right click on the desktop icon and select "Run as administrator". With "Breeze Systems" DSLR Remote Pro v3.6.1 **running** in administrator mode, select the "Advanced Settings" tab at the top of the screen. Use the "load" button witin the "Advanced Settings" window to open the "Load Photobooth Settings" browser and use this browser to navigate to the "Change Printer" folder located in the C:\Program Files\The Incredible Booth. Once located, open the folder and highlight the "Landscape.xml" file and click "Open"

Step 2. Once "Landscape.xml" is loaded, click on the "Print Layout" tab in "Advanced Settings" to view the "Print Format". Once the layout has been viewed for reference, and you are aware of the necassary amendments required, click "Ok".

DO NOT AMEND THE PRINTER SETTINGS FROM THE PRINT LAYOUT WINDOW.



As pictured above in the right hand image, you can see a configuration mismatch with the print format. In this instance this is due to the print driver configuration being incorrect.

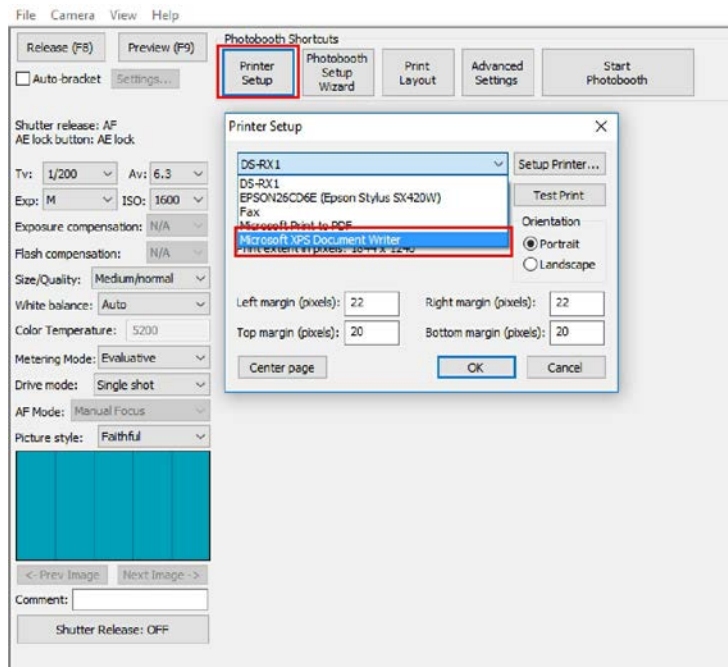
Step 3. Once the “Print Layout” screen has been closed, click "Ok" to close the "Advanced Settings" window. Click the "Printer Setup" tab at the top of the "Home" screen to open the printer settings.

Note: **DO NOT** amend the "Printer Setup" from inside the "Print Layout" window.

IMPORTANT!

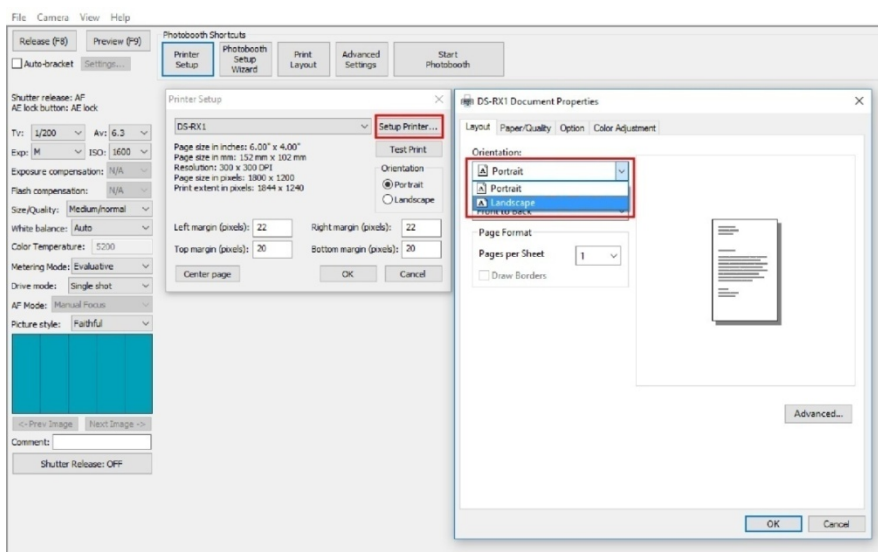
ENSURE YOU RESET THE PRINTER DRIVER SETTINGS BEFORE AMENDING EACH XML FILE!!!

How To Do This: Click on the printer selection box and select an alternative setting, E.g. "Microsoft XPS Document Writer". The selection box will now close. Click the printer selection box once more and then select your desired photo printer. Selecting an alternative printer first and then selecting your required printer ensures the correct data being loaded from the newly installed printer driver.



Ensuring the important step above has been executed and the desired printer is now selected, click "Setup Printer".

The "Document properties" window will open. Ensure that the "Orientation" is set correctly for the .xml file you are amending and additionally for the printer you are amending it for! In the case of the DNP printers and possibly others, the "Landscape" print orientation setting represents a PORTRAIT and STRIPS print format. Vice versa, the "Portrait" orientation setting represents a LANDSCAPE print format.



In this example, the “Landscape.xml” file has been loaded for amendment on a DNP-DS RX1. In the print dialog window we will select the print orientation to be set as “Portrait”.

Step 3 Continued.

Advanced Printer Settings For Landscape.xml, DNP-DS RX1 Only.

With the "Orientation" set correctly to "Portrait" click the "Advanced" tab in the "Printer Properties" window.

THIS INFORMATION IS APPLICABLE TO THE "Landscape.xml" ONLY.

In the "Advanced Printer Options" ensure that the following is correct

"Paper Size": Set to, (6x4).

"Copy Count": Set to, 1 Copy.

"Print Quality": Set to, 300 x 300 dpi.

"ICM Method": Set to, ICM Disabled.

"ICM Intent": Set to, Pictures.

"Advanced Printing Features": Set to, Enabled.

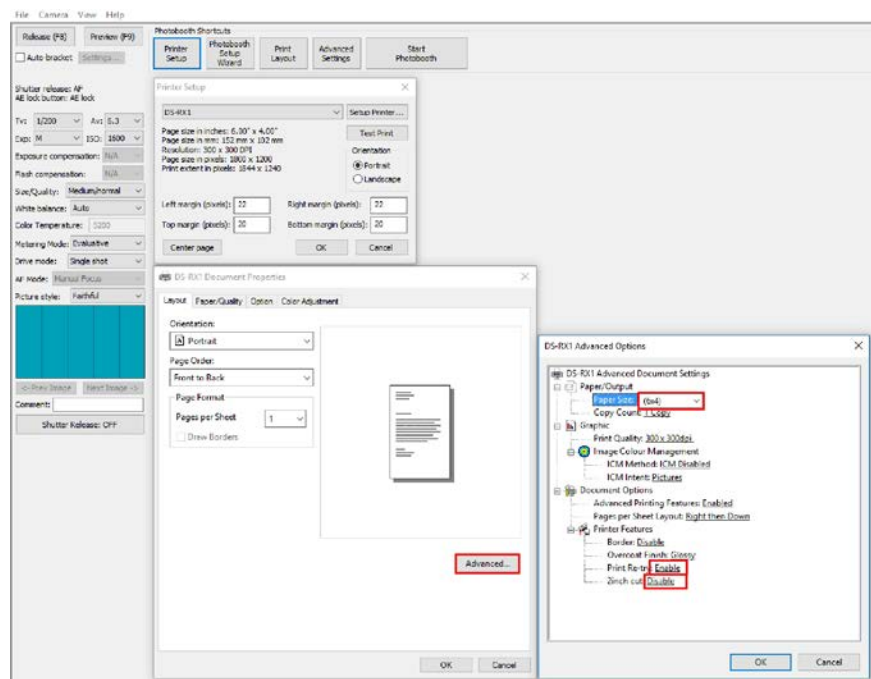
"Pages Per Sheet Layout": Set to, Right Then Down.

"Border": Set to, Disabled.

"Overcoat Finish": Set to, Glossy.

"Print Re-try": (This setting is defined by the main printer properties within windows and cannot be changed within this setup window).

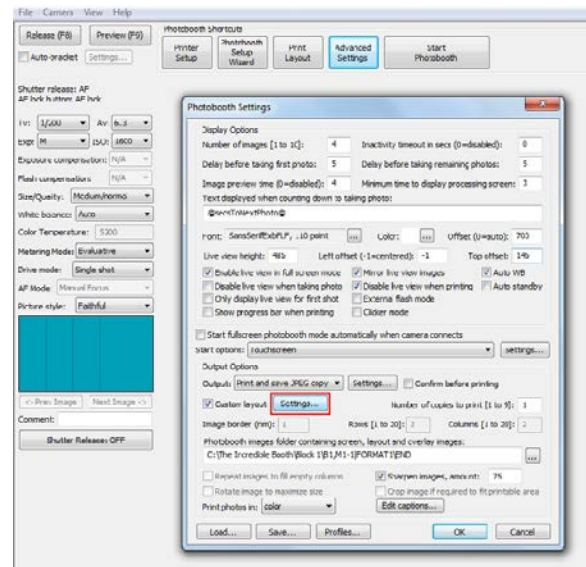
"2inch cut": Set to, Disable.



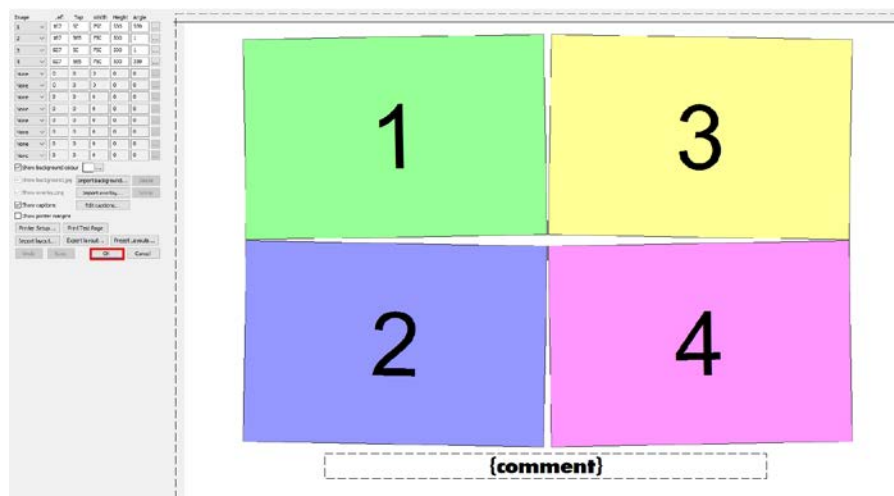
The settings marked in **RED** are the essential settings to check.

Step 4. With the amendments of the "Advanced" printer setting complete. Double check and then click "Ok". This will close the "Advanced" printer settings window. Click "Ok" in the "Document Properties" window and then click "Ok" in the "Printer Setup" window. You should be now back at the "Breeze Systems" DSLR Remote Pro v3.6.1 "Home" screen.

Select the "Advanced Settings" tab at the top on the screen and then click on the "Print Layout" tab to preview the print layout again as done in step 2.



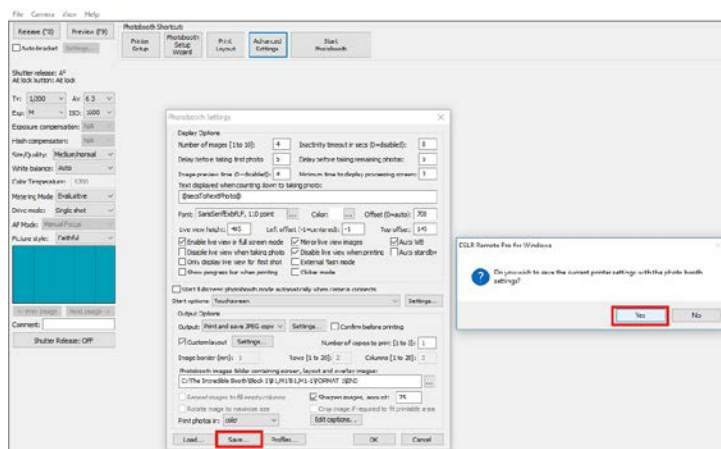
Providing that the previous instruction regarding the printer setup has been followed correctly you should have a correctly configured "Landscape" print format. In the event that the print format still appears incorrect, double check the advanced settings again and repeat the reconfiguration process as mentioned throughout step 3.



If the reconfiguration of "Landscape.xml" was successful and the format of the print on the host computer is presented as the above then click "Ok" to close the print preview window.

Do not close the "Advanced Settings" window.

Step 5. With the "Advanced Settings" window still open, click the "SAVE" button located at the bottom of the window.



"Breeze Systems" DSLR Remote Pro v3.6.1 will now prompt and ask:

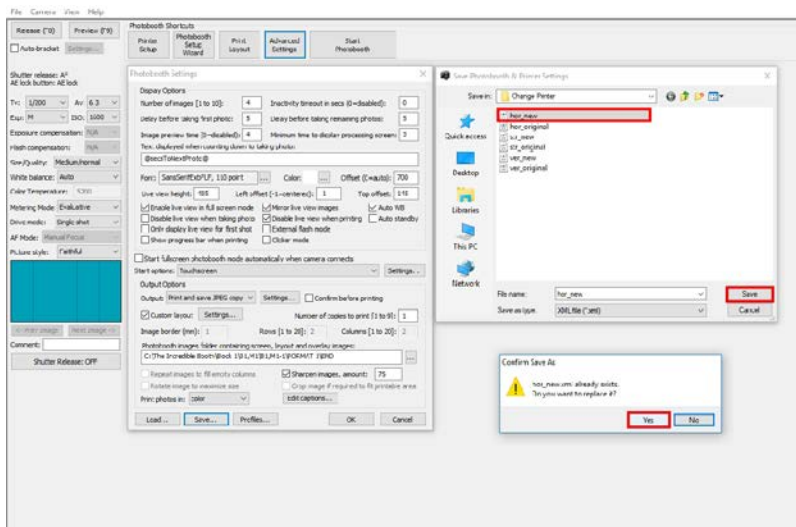
"Do You Wish To Save The Current Printer Settings With The Photo Booth Settings?"

Ensure you click **"YES"**

A "Save Photobooth & Printer Settings" browser window will now appear. Contained in this browser are the 3 xml files that were discussed in section 4.2.

Providing that at the beginning of this specific reconfiguration process the **"Landscape.xml"** was loaded and ammended, highlight **"Landscape.xml"** file with a single click and overwrite it by clicking **"Save"**. You will be prompted by the browser that,

"Landscape.xml" already exists, Do you want to replace it?



Ensure you click **"YES"** (providing you are ammending the "Landscape" xml)

Step 5 Continued. To complete the reconfiguration process, the 2 remaining XML files (Portrait.xml & Strips.xml) must also be loaded and amended separately in the same way as the "landscape.xml" file detailed above. Ensure steps 2 through 5 are repeated correctly for each of the xml files, paying attention to ensure all the relevant printer settings are entered correctly (Datasheets available for both DNP-DS RX1 users only).

NOTE: REMEMBER TO ENABLE THE 2 INCH CUT (DNP-DS RX1) OR SELECT THE 2X5X15 TYPE 1 PAPER SETTING (CP-D70DW) WHEN AMENDING THE "Strip.xml" FILE.

Continue to "step 6"

Strips.xml Data Sheet.

Advanced Printer Settings For Strips.xml, DNP-DS RX1 Only.

With the "Orientation" set correctly to "Landscape" click the "Advanced" tab in the "Printer Properties" window.

THIS INFORMATION IS APPLICABLE TO THE "Strips.xml" ONLY.

Remember to enable the 2inch cut for the passport strip format.

In the "Advanced Printer Options" ensure that the following is correct

"Paper Size": Set to, (6x4).

"Copy Count": Set to, 1 Copy.

"Print Quality": Set to, 300 x 300 dpi.

"ICM Method": Set to, ICM Disabled.

"ICM Intent": Set to, Pictures.

"Advanced Printing Features": Set to, Enabled.

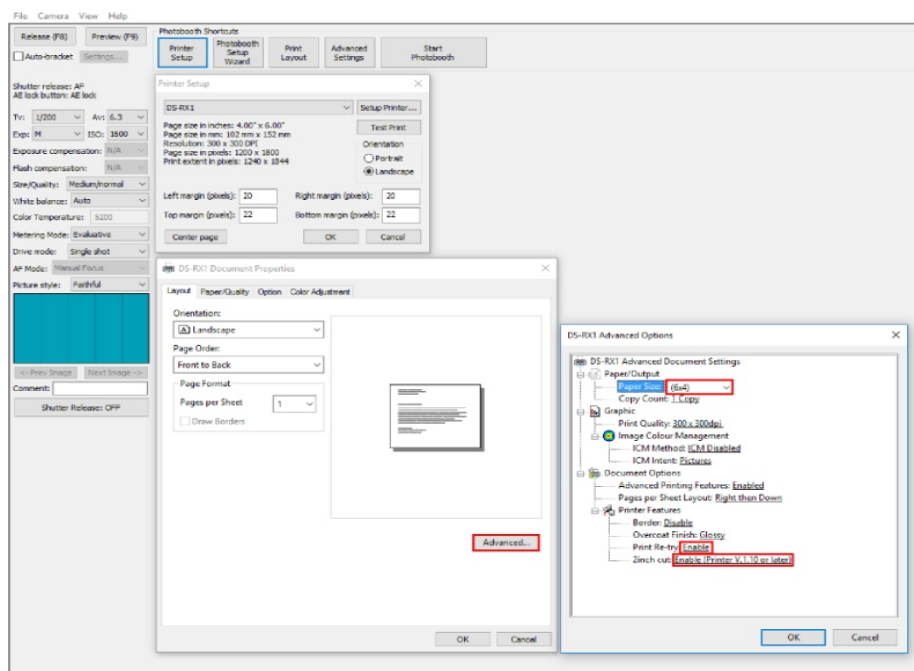
"Pages Per Sheet Layout": Set to, Right Then Down.

"Border": Set to, Disabled.

"Overcoat Finish": Set to, Glossy.

"Print Re-try": (This setting is defined by the main printer properties within windows and cannot be changed within this setup window).

"2inch cut": Set to, Enable (Printer V.1.10 or later)



The settings marked in **RED** are the essential settings to check.

Portrait.xml Data Sheet.

Advanced Printer Settings For Portrait.xml, DNP-DS RX1 Only.

With the "Orientation" set correctly to "Landscape" click the "Advanced" tab in the "Printer Properties" window.

THIS INFORMATION IS APPLICABLE TO THE "Portrait.xml" ONLY.

In the "Advanced Printer Options" ensure that the following is correct

"Paper Size": Set to, (6x4).

"Copy Count": Set to, 1 Copy.

"Print Quality": Set to, 300 x 300 dpi.

"ICM Method": Set to, ICM Disabled.

"ICM Intent": Set to, Pictures.

"Advanced Printing Features": Set to, Enabled.

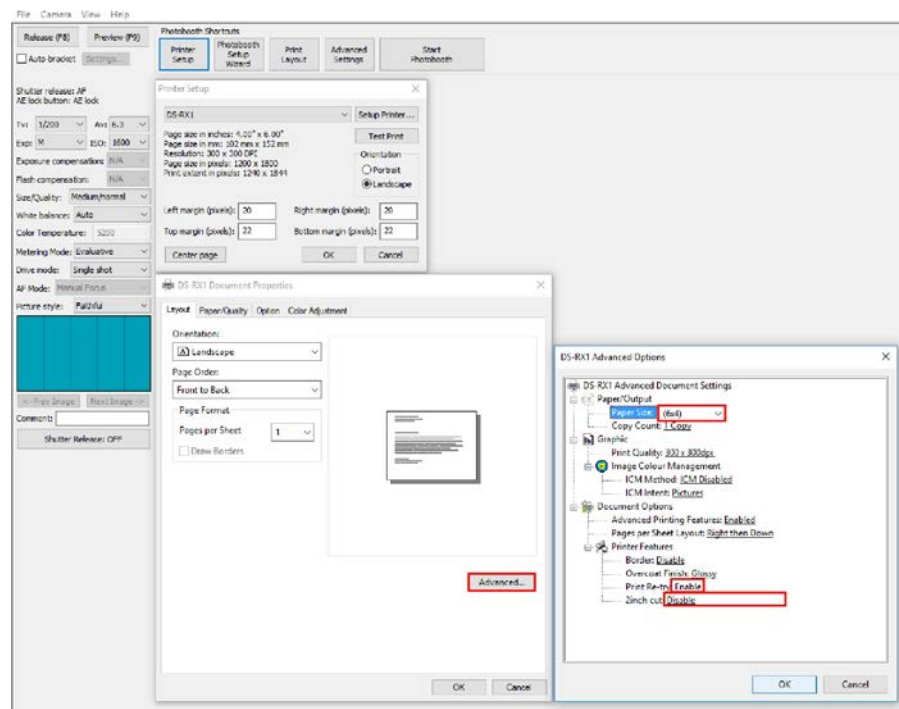
"Pages Per Sheet Layout": Set to, Right Then Down.

"Border": Set to, Disabled.

"Overcoat Finish": Set to, Glossy.

"Print Re-try": (This setting is defined by the main printer properties within windows and cannot be changed within this setup window).

"2inch cut": Set to, Disable.

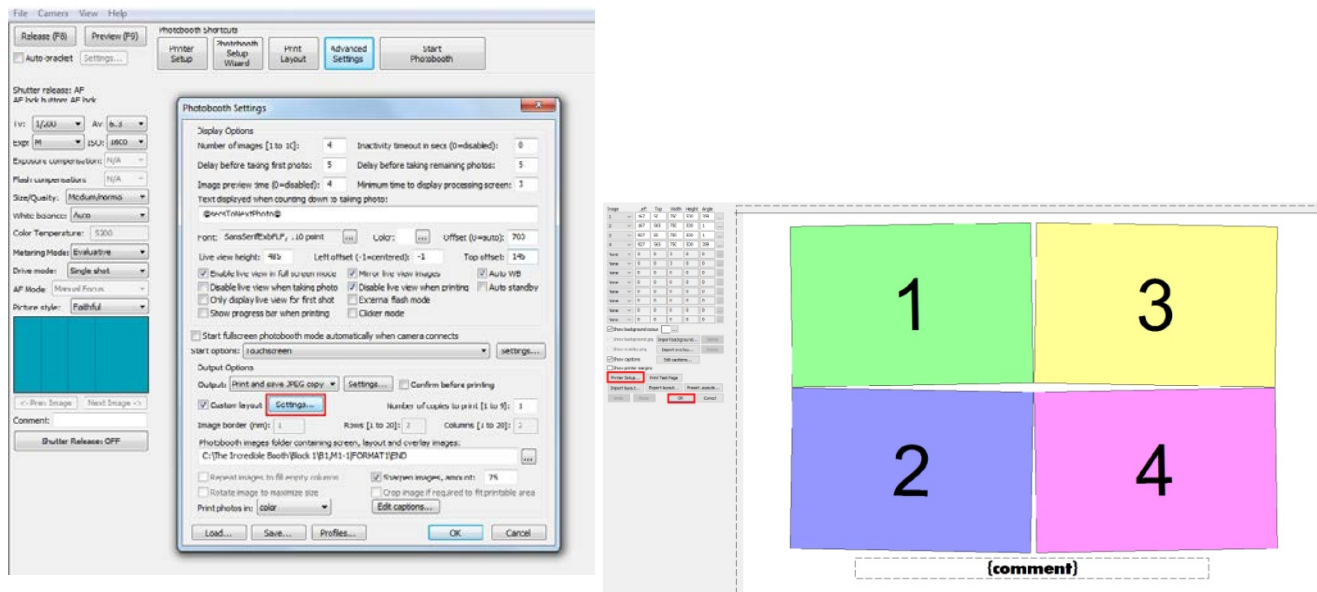


The settings marked in **RED** are the essential settings to check.

Step 6. After the amending and saving the relevant printer settings to each of 3 XML files, it is recommended that prior to executing the "Change Printer" application, all amendments are double checked to ensure the correct printer settings have been applied correctly to the relevant xml files.

How To Do This: Using "Breeze Systems" DSLR Remote Pro v3.6.1, click on the "Advanced Settings" tab at the top of the "Home" screen and the select on the "Load" button to open the "Load Photobooth Settings" browser. If the "Change Printer" folder is not already present, then use the "load photobooth settings" browser to navigate to the "Change Printer" folder which is located in C:\Program Files\The Incredible Booth. Once located, highlight the "Landscape.xml" file and click "Open"

With the "Landscape.xml" file loaded, select the "Print Layout" button and open the "print preview" window to ensure it appears correct.



Select the "Printer Setup" button on the left hand side of the preview window and double check the orientation settings are correct. It is also advisable to check the "Advanced" printer settings correct for the amendments made earlier in step 3. Ensuring everything is correct, click "Ok" to close the "Printer Setup" window and continue to check the remaining "Portrait.xml" and the "Strips.xml" files in the same way as detailed above.

In the event that an incorrectly formatted xml file is found. It will be necessary to make the appropriate changes from the "Printer Setup" button on the "Home" screen and then re-save the xml in the same way as detailed in step 5.

Remember to ensure that the 2inch cut / 2x5x15 paper setting is saved to the strips.xml file

Step 7. Only once the checking process of "Landscape.xml", "strips.xml" and the "Portrait.xml" has been completed and you are satisfied that all 3 xml files have the correct print orientation saved, with the correct advanced printer settings saved should you consider running the "PrinterConfig.exe" application.

Configuration

Exit "Breeze Systems" DSLR Remote Pro v3.6.1 and ensure that all folders and files that may relate to "The Incredible Booth" software are also closed. Open the host computers C: drive and navigate to the following location,

C:\Program Files (x86)\The Incredible Booth\Change Printer

Saved in this folder you will notice the 3 newly configured xml files entitled "Landscape.xml", "Portrait.xml" and "Strips.xml" that were amended earlier in "Breeze Systems" DSLR Remote Pro v3.6.1 along with an application entitled "PrinterConfig.exe".

Providing that complete satisfaction has been met during the amendment of the 3 xml files in the previous steps, right click on the "PrinterConfig" application and select "Run as administrator". The PrinterConfig.exe will now run and reconfigure "The Incredible Booth" software with the new printer configuration data saved in "Landscape.xml", "Portrait.xml", and "Strips.xml".

Upon completion of the reconfiguration you will be prompted so by the application, click "Done"

"THE INCREDIBLE BOOTH" software should now be correctly configured.

Step 8. Once the reconfiguration process of "THE INCREDIBLE BOOTH" is complete it is essential to check that the re-configuration was successful.

How To Do This: Open "Breeze Systems" DSLR Remote Pro v3.6.1 and click on the "Advanced Settings" tab at the top of the screen. Use the "Load" button in the "Advanced Settings" to open the "Load Photobooth Settings" browser and then use the browser to navigate to "The Incredible Booth" folder located in the C: drive. Open "The Incredible Booth" folder and locate and open the folder entitled "Printer Config"

This folder can be found at the following location: C:\The Incredible Booth\Printer Config

Using "Breeze Systems" DSLR Remote Pro v3.6.1, load **each of the 3 "check" xmls in turn**. View the print preview using the "Print Layout" tab in "Advanced Settings" and additionally check the "Printer Setup" and "Advanced" printer settings to ensure the correct printer configuration is now evident after re-configuration. Providing that everything is configured correctly and appears visually correct, click the "Print Test Page" tab on the left hand side of the preview screen and ensure your printer reproduces a correctly configured print format.

Repeat this process for each individual .XML file in the Printer Config folder and upon satisfactory completion of step 8 the reconfiguration process is complete.

A FULL RESTART OF THE HOST COMPUTER IS REQUIRED THE RECONFIGURATION OF THE INCREDIBLE BOOTH

In the event that an incorrectly formatted xml file is encountered. It may be necessary to repeat this section on re-configuration or contact the Technical Support Team for further assistance. Contact us on 0044 (0) 2392 473914 or Email us at info@theincrediblebooth.com for guidance and advise on the subject of reconfiguration.

SECTION 5: Customisation

5.1 Overview.

Customisation tool Section

About customization tool

what it does and how to use it

Social Media on/off and message boxes and logs

Loading Gif Title Overlay and setting up gifs as per breeze

Loading CustomOverlays

Additional settings

Gif Booth Section

Amending settings in Gif booth / video booth

Amending PBO templates

Amending Custom GS templates

Pop Art

Lock down mode

Step 9. Ensuring that the touch screen monitor, camera and printer are connected correctly to the host computer, open "Breeze Systems" DSLR Remote Pro v3.6.1. Click on the "Advanced Settings" tab at the top of the screen and click "load". Using the "Load Photobooth Settings" browser, navigate the browser to the C: drive and open the folder entitled "The Incredible Booth". Load the XML file entitled "THE INCREDIBLE BOOTH, LOAD ME and click "Ok".

End Of Section

Please refer to the "Operations" Section of this manual for guidance on operating and customising "The Incredible Booth" software.

SOFTWARE MANUAL



CUSTOMISATION AND OPERATIONS

PREPARED BY: THE INCREDIBLE BOOTH

Section 5.1 Basic Functions Overview

"The Incredible Booth" has been developed to offer a pre-configured, convenient, no hassle, out the box solution to the complex task of generating multi-purpose green screen photo booth software. Complete with 5 unique photo booth modes, **an awesome array of background and layout combinations, a single background lock down mode, social media intergration and a catalog of other feature rich additions**, "The Incredible Booth" really does for-fill every requirement.. The operation principles of "The Incredible Booth" have been designed to work seamlessly with "Breeze Systems" DSLR Remote Pro v3.6.1 whilst being as straight forward as possible. Once installed and configured, our unique customisation tool will easily amend "The Incredible Booth" software to suit every requirement.

Section 5.2 Basic Screens, Controls, And Functions.

To start "The Incredible Booth" software, use the "Advance Settings" tag in "Breeze Systems" DSLR Remote Pro v3.6.1 to load "THE INCREDIBLE BOOTH, LOAD ME" XML file located in the main C: drive directory within "The Incredible Booth" folder. Once loaded click on the "Start Photo Booth" tab in "Breeze Systems".



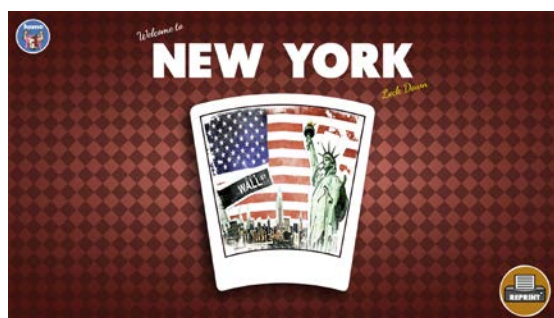
Basic Functions: "Home" Screen

The screen shown below is "The Incredible Booth main "Home" screen. The "Home" screen acts as the main access point for each of the 5 photo booth modes offered within "The Incredible Booth" and can be accessed at any point by using the "Home" button found in the top left hand corner of the screen throughout "The Incredible Booth".



Basic Functions, The Incredible Booth “Home” Screen.

“The Incredible Booth” main “Home” screen acts as the start point and main menu whilst operating within “The Incredible Booth” photo booth mode. Access to 10 awesome photo booth categories such as “Famous Landmarks”, “Timeline” and “Background Bingo” can be accessed from this “Home” screen along with access to the “Reprints” feature. Providing “The Incredible Booth” is not set to “Lock Down” mode, this “Home” screen will be displayed after the completion of each photo booth shooting sequence ready for the next client to make their selection.



If “The Incredible Booth” “Lock Down” feature is enabled, after the first photo booth sequence a “Home” screen detailing the selection made will be shown. Whilst in “Lock Down” mode it is possible to commence a new photo booth sequence, produce an “Instant” reprint and access the main “Home” screen showing the 5 photo booth modes. Access to an alternative theme and layout is made by using the main “Home” screen button.

Basic Functions: "GIF Booth" Home Screen

“The GIF Booth” main “Home” screen acts as a start point when operating within the “GIF Booth” mode. Access to enter either the “Classic GIF Booth” or “Green Screen GIF Booth” is gained through this first screen.

Once a “GIF Booth” mode has been selected, the “Home” screen of the selected mode is displayed. The “Classic GIF Booth” and “Green Screen GIF Booth” are both supplied pre-configured with options to create Slow Motion, Standard, and High Speed GIF animations.

The GIF Booth can be operated in 1 of 2 modes. The first operating mode runs in the same manner as “The Incredible Booth” mode. This gives clients the option each time to create either a “Slow Speed”, “Standard” or “High Speed” GIF animation. The second operating mode specifies which animation will be used to create the animated GIF. This is achieved by selecting “Profile 2” within the “Breeze Systems” DSLR Remote Pro v3.6.1 “Advanced Settings” profile menu and running the selected mode in “Lock Down”.

Please refer to the Section 8 of this manual for further information and instruction relating to the “Lock Down” mode.



Basic Functions: Customization of “Classic GIF Booth”.

The “Classic GIF Booth” modes are supplied pre-configured to create various GIF animations without green screen enabled. The “GIF” configuration settings for these animations are stored in the “Profile4” xml file within C:\The Incredible Booth\Block 2 Gif Booth folders and can be amended by accessing the relevant “Profile4”.xml file from the addresses below within "Breeze Systems" DSLR Remote Pro v3.6.1.

Load “Profile4” by **copying and pasting** the following address’s into the ”FILE NAME” text box in the “LOAD” function within "Breeze Systems" DSLR Remote Pro v3.6.1 “Advanced settings”

Classic “GIF Booth” Modes.

Classic “Slow Motion” GIF Booth Settings File

C:\The Incredible Booth\Block 2 Gif Booth\B2,M1 - Classic Booth Gif\B2,M1-1 Classic Slow Motion Animation

Classic “Slow Motion” GIF Booth Lock Down Settings File

C:\The Incredible Booth\Block 2 Gif Booth\B2,M1 - Classic Booth Gif\B2,M1-1 Classic Slow Motion Animation\End\LOCK DOWN

Classic “Standard Animation” GIF Booth Settings File

C:\The Incredible Booth\Block 2 Gif Booth\B2,M1 - Classic Booth Gif\B2,M1-2 Classic Standard Animation

Classic “Standard Animation” GIF Booth Lock Down Settings File

C:\The Incredible Booth\Block 2 Gif Booth\B2,M1 - Classic Booth Gif\B2,M1-2 Classic Standard Animation\End\LOCK DOWN

Classic “High Speed” GIF Booth Settings File

C:\The Incredible Booth\Block 2 Gif Booth\B2,M1 - Classic Booth Gif\B2,M1-3 Classic High Speed Animation

Classic “High Speed” GIF Booth Lock Down Settings File

C:\The Incredible Booth\Block 2 Gif Booth\B2,M1 - Classic Booth Gif\B2,M1-3 Classic High Speed Animation\End\LOCK DOWN

Load “Profile4” in both locations into "Breeze Systems" DSLR Remote Pro v3.6.1, access the “Videobooth Settings” dialog box amend the GIF settings and re-save / overwrite “Profile4”

Please refer to the “**Animated GIF**” section of the "Breeze Systems" DSLR Remote Pro v3.6.1 user manual for insight into the setup and additional information relating to this feature.



Basic Functions: Customization of “Green Screen GIF Booth”.

The “Green Screen GIF Booth” modes are supplied pre-configured to create various GIF animations with green screen. The “GIF” configuration settings for these animations are stored in the “Profile4” xml file within C:\The Incredible Booth\Block 2 Gif Booth folder and can be amended by accessing the relevant “Profile4”.xml file from the addresses below within "Breeze Systems" DSLR Remote Pro v3.6.1.

Load “Profile4” by **copying and pasting** the following address’s into the ”FILE NAME” text box in the “LOAD” function within "Breeze Systems" DSLR Remote Pro v3.6.1 “Advanced settings”

Green Screen “GIF Booth” Modes.

Green screen “Slow Motion” GIF Booth Settings File

C:\The Incredible Booth\Block 2 Gif Booth\B2,M2 - Green Screen Booth Gif\B2,M2-1 Green Screen Slow Motion Animation

Green screen “Slow Motion” GIF Booth Lock Down Settings File

C:\The Incredible Booth\Block 2 Gif Booth\B2,M2 - Green Screen Booth Gif\B2,M2-1 Green Screen Slow Motion Animation\End\LOCK DOWN

Green screen “Standard Animation” GIF Booth Settings File

C:\The Incredible Booth\Block 2 Gif Booth\B2,M2 - Green Screen Booth Gif\B2,M2-2 Green Screen Standard Animation

Green screen “Standard Animation” GIF Booth Lock Down Settings File

C:\The Incredible Booth\Block 2 Gif Booth\B2,M2 - Green Screen Booth Gif\B2,M2-2 Green Screen Standard Animation\End\LOCK DOWN

Green screen “High Speed” GIF Booth Settings File

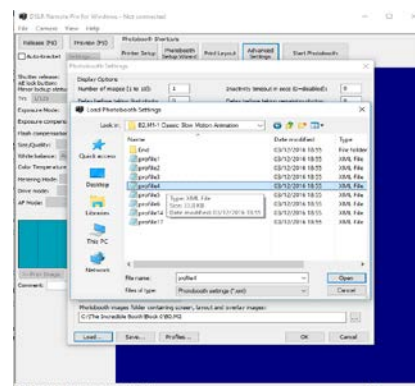
C:\The Incredible Booth\Block 2 Gif Booth\B2,M2 - Green Screen Booth Gif\B2,M2-3 Green Screen High Speed Animation

Green screen “High Speed” GIF Booth Lock Down Settings File

C:\The Incredible Booth\Block 2 Gif Booth\B2,M2 - Green Screen Booth Gif\B2,M2-3 Green Screen High Speed Animation\End\LOCK DOWN

Load “Profile4” in both locations into "Breeze Systems" DSLR Remote Pro v3.6.1, access the “Videobooth Settings” dialog box amend the GIF settings and re-save / overwrite “Profile4”

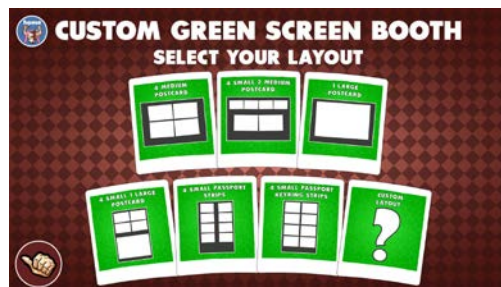
Please refer to the “**Animated GIF**” section of the "Breeze Systems" DSLR Remote Pro v3.6.1 user manual for further insight into the setup and additional information relating to this feature.



Basic Functions: Custom Green Screen Booth.

The “Custom Green Screen Booth” enables custom green screen, background and overlay images to be added to a pre-configured green screen layout of your choosing. The “Custom Green Screen Booth” currently offers 6 pre-configured layouts along with a custom layout option. The 6 pre-configured layouts offers the advantage of simply adding the required green screen images, background.jpg and overlay.png images to the desired layout directory and instantly creating a ready to go green screen photo booth. The “Custom Layout” option further adds the flexibility to create a truly unique one off green screen photo booth layout within "Breeze Systems" DSLR Remote Pro v3.6.1 should the need arise.

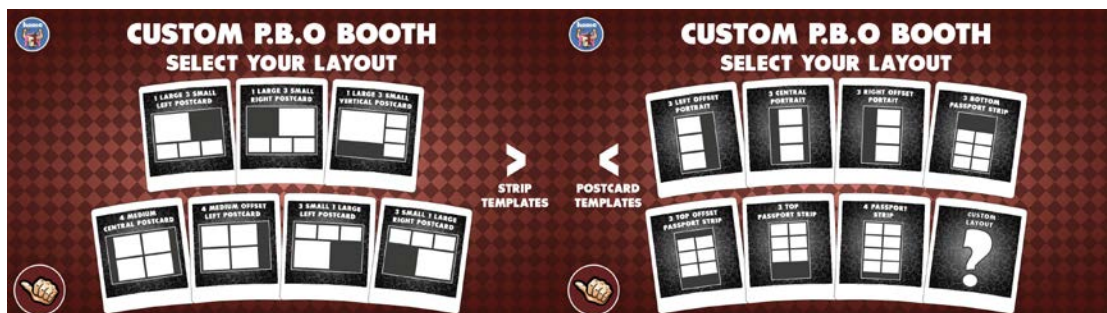
Each layout option within “Custom Green Screen Booth” mode operates in “Lock Down”. Once a desired layout is selected, the “Custom Green Screen Booth” will operate within that one layout option. It is not possible to combine a selection of different layouts within the “Custom Green Screen Booth” mode.



Basic Functions: "Custom P.B.O Booth".

The “Custom P.B.O Booth” is what we term a “Classic” booth or none a “Green Screen” booth. The “Custom P.B.O Booth” enables, background and overlay images purchased from photoboothtemplates.com to be directly added to the relevant pre-configured P.B.O layout. The “Custom P.B.O Booth” currently offers 14 layouts option which currently reflect all layouts available from photoboothtemplates.com along with a custom layout option. These 14 pre-configured layout options offer the advantage to simply add the required background.jpg and overlay.png image to a relevant image directory and instantly create a ready to go Classic photo booth mode. The “Custom Layout” option further adds the flexibility to create a truly unique one off “Classic” (non-green screen) photo booth layout within "Breeze Systems" DSLR Remote Pro v3.6.1 should the need arise.

Each layout option within “Custom P.B.O Booth” mode operates in “Lock Down”. Once a desired layout is selected, the “Custom P.B.O Booth” will operate within that one layout. It is not possible to combine a selection of different layouts within the “Custom P.B.O Booth” mode.



Basic Functions: "Video Booth" mode

“The Video Booth” main “Home” screen acts as a start point when operating within “Video Booth” mode. Access to either the “Classic Video Booth” or “Green Screen Video Booth” is gained through this first screen.



Once a “Video Booth” mode has been selected, the “Home” screen of that selected mode is displayed. The “Classic Video Booth” and “Green Screen Video Booth” modes are both supplied pre-configured to create 25 second Movie File.

Basic Functions: Customization of “Video Booth Mode

The “Video Booth” configuration settings are stored in an xml file entitled “Profile4”. “Profile4” xml files for booth video booth modes are stored in the locations listed below and the settings can be changed by opening, amending, and re-saving the xml files in "Breeze Systems" DSLR Remote Pro v3.6.1.

Load “Profile4” from the following locations by copying and pasteing the following address’s into the “FILE NAME” text box inside the “LOAD” tab dialog box in "Breeze Systems" DSLR Remote Pro v3.6.1 “Advanced settings”

Classic Video Booth Settings File

C:\The Incredible Booth\Block 5 Video Booth\B5,M1 - Classic Video Booth\B2,M1-1 Classic Video Booth

Load the “Profile4” xml file into "Breeze Systems" DSLR Remote Pro v3.6.1, access the “Videobooth Settings” dialog box, amend the settings and re-save / overwrite “Profile4”

Green Screen Video Booth Settings File

C:\The Incredible Booth\Block 5 Video Booth\B5,M2 - Green Screen Booth\B5,M2-1 Green Screen Video Booth

Load “Profile4” xml file into "Breeze Systems" DSLR Remote Pro v3.6.1, access the “Videobooth Settings” dialog box, amend the settings and re-save / overwrite “Profile4”

Basic Functions: “Video Booth” In Operation.

The “Video Booth” modes operate in a “Lock Down” mode once a desired mode is selected. The “Video Booth” will operate within that one mode until exited. It is not possible to combine the two Video Booth Modes.



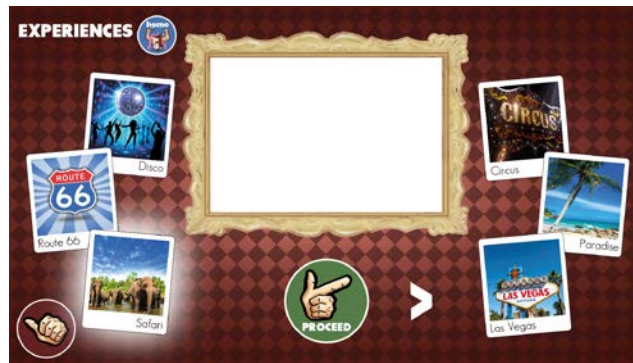
Note: In video booth mode, green screening is only applied to the live view images displayed to the user. It is not applied to the movie files downloaded from the camera or during video playback.

Basic Functions: Themes & Background Selection.

In each the 6 main categories on the "Home screen" is a huge variety of green screen themes and backgrounds to choose from. When scrolling through the subsequent menus, the **currently** selected theme or setting will be displayed with a white highlight around it to notify the user of their current selection. As various themes and backgrounds are selected using the touch screen, the image within the live view in the center of the screen will change with selection. The background shown in the frame upon selection will be the first green screen background in the photo booth shooting sequence once the shoot has begun.

Within the categories of "Famous Landmarks", "Time Line" and "Experiences", additional themes are available within a second page. The arrows to the left and right of the "Proceed" button can be used to navigate between the different pages.

At the top of the page is a "Home" button. This will cancel all selections made and divert the client back to the main "Home" screen, additionally the "Back" button in the bottom left, will take the client to the previously selected page.



Print Layouts.

The layouts page offers the opportunity to specify how the final print will to be presented. There are 5 main print layouts to choose from and each print layout can be applied throughout the entire range of backgrounds included in **"The Incredible Booth"** software. An additional format has been provided should a "key ring" style print be required. This format will automatically provide the client with a 3 shot photo booth session combined with their chosen theme and then provide a passport style strip with 3 perfectly sized photos which are suitable for all 45mm x 35mm key ring cutters. The "Key Ring" format is the icon in the bottom right and represented as a "K" to avoid unwanted attention.



Basic Functions: Picture Style & Copy Count.

The picture style and copy count page is the last page prior the photo booth start sequence starting. The menu on the left provides the client with 3 options for picture style. The client can specify what style the photos are taken, color is selected as default, aside from the "Western" Theme, where black and white is default. Additionally, the "Gangsters" theme will default to sepia "vintage". Both themes however can be amended by the client should alternative styles be required.

The menu on the right provides the option to increase the output copy count where required from 1-4.

Once the final selections have been made, press "Start". This will commence the photo booth session and automatically count down and capture the individual shots ready for processing. Once the session is complete the client will be presented with a confirmation screen asking them to leave the booth and collect their photos. Once processing is complete the booth will return to the "Home" screen.

For details on the "Reformatting" of reprints please see the "Reprints" section of this manual.



Basic Function: Secret Exit Button.

Should it be necessary to quite the photo booth session and immediately return to the host computers desktop. In the very top right hand corner of every screen is a secret button. This button will immediately close the full screen photo booth mode and cancel all selections and current photo booth shooting sequences. It is recommended not to use this button as a normal means of exiting the software, however it is understood that occasionally, immediate action and exiting of the full screen photo booth mode is required.



Section 6.1 The Customization Tool Overview

“The Incredible Booth” has been developed to offer a pre-configured, convenient, no hassle, out the box solution to the complex task of generating multi-purpose photo booth software. Complete with 5 unique photo booth modes, an awesome array of background and layout combinations, a single background lock down mode, social media integration and a catalog of other feature rich additions, “The Incredible Booth” really does for-fill every requirement.. The operation principles of "The Incredible Booth" have been designed to work seamlessly with "Breeze Systems" DSLR Remote Pro v3.6.1 whilst being as straight forward as possible. Once installed and configured, our unique customisation tool will easily amend “The Incredible Booth” software to suit every requirement.

Section 6.2 The Incredible Booth Customisation Tool

The Customization tool should be regarded as the control center of “The Incredible Booth” software. It has been developed to ensure the simplest and most effective way to customize “The Incredible Booth”, “Custom Green Screen” and “Custom P.B.O” modes of the software. The customization tool is exempt from amending any settings within the “GIF Booth” or “Video Booth”, these 2 photo booth modes should be amended by loading “Profile 4” through the conventional "Breeze Systems" DSLR Remote Pro v3.6.1 dialog box.

With "Breeze Systems" DSLR Remote Pro v3.6.1 open, the Customisation Tool can be accessed easily in several different ways,

1. When "Breeze Systems" DSLR Remote Pro v3.6.1 is opened, a prompt will be displayed asking “Would Your Like To Use “The Incredible Booth” Customisation Tool”. Click Yes.
2. Upon install, an “The Incredible Booth” options folder has now been added to the “Apps” section of the “Start” menu within windows. You will find a shortcut to the customisation tool here.
3. With "Breeze Systems" DSLR Remote Pro v3.6.1 open, press F10.

Once open, the Customization Tool will display an array of options and settings which mirror the settings seen and used in "Breeze Systems" DSLR Remote Pro v3.6.1. Each setting can be customized to suit your individual photo booth setup and an individual client’s requests. Once a setting is amended and customized the value will remain stored within the customization tool and the software until it is either changed to an alternative setting or the “Default” button is actioned to return “The Incredible Booth” to its default state.

Customisation Tool

THE INCREDIBLE BOOTH
CUSTOMISATION TOOL.

SOCIAL MEDIA SETTINGS.

ENABLE SOCIAL MEDIA SHARING. ☐ ON ☐ OFF ☐ GIF

FACEBOOK ALBUM NAME.

EMAIL SUBJECT.

EMAIL MESSAGE.

TWITTER COMMENT. Max 120 Characters.

M.M.S./ SMS COMMENT.

GIF SETTINGS.

CREATE ANIMATED GIF OF PHOTO. ☐ ON ☐ OFF ☐ MP4

ANIMATED GIF SETUP.

FONT & CAPTION SETTINGS.

FONT.

CHANGE TOKEN OR MESSAGE, DEFAULT = {COMMENT}.

CUSTOM OVERLAY'S.

4 MED. 2 LRG 4 SML. 1 LRG. 1 LRG 4 SML. 4 IN STRIP.

ADDITIONAL SETTINGS.

MIRROR LIVE VIEW IMAGES. ☐ ON ☐ OFF

ENABLE FLASH MODE. ☐ BELOW ☐ ABOVE

CAMERA POSITION. ☐ ☐

IMAGE PREVIEW TIME. TIME IN SEC'S

MINIMUM IMAGE PROCESSING TIME. TIME IN SEC'S

CAMERA SETTINGS. ☐ SIMPLE ☐ BANK 1 ☐ BANK 2

Section 6.3 Explanation of The Customization Tool Settings.

“Social Media Settings”

“Enable Social Media Sharing” = On / Off

A social media sharing option can be displayed at the end of each Photo Booth session allowing clients to upload either their photos directly to **Cellphones**, Email, Facebook, or Twitter accounts. An additional option exists entitled “GIF” should the need exist to share an animated GIF. “Create Animated Gif of Photo” needs to be enabled.

“Facebook Album Name”

With “Social Media Sharing” enabled, a Facebook album name can be specified with the photo / GIF when uploading to client’s Facebook pages.

“Email Subject”

With “Social Media Sharing” enabled an Email subject heading can be specified when uploading to client’s Email accounts.

“Email Message”

With “Social Media Sharing” enabled a unique Email message can be displayed alongside the attached photo or GIF when uploading to client’s email account. The Email message can be specified as either plain text or HTML.

“Twitter Comment”

With “Social Media Sharing” enabled a Twitter Comment can be specified and displayed when uploading to client’s Twitter account. Please note that a maximum character count of 120 exists.

“MMS Comment”

With “Social Media Sharing” enabled a MMS/SMS Message can be specified and displayed when uploading to client’s Cellphone.

“GIF Settings”

“Create Animated GIF of Photo” On / Off

The “Create Animated GIF of Photo” option is available for creation of an animated GIF’s. The GIF is created from the photos captured during a normal photo booth session and should the need exist to share the animated GIF’s via social media, it is essential that the “GIF” setting in the “Enable Social Media Sharing” section of the customization tool is enabled.

It is recommended that when uploading to sites such as Facebook that “MP4” setting is also enabled.

“MP4”

In addition to the “Create Animated GIF of Photo”, an “MP4” setting exists. The “MP4” setting enables an additional animated GIF to be created in an MP4 format. The MP4 GIF is much smaller than the original raw GIF file making it ideal when uploading to sites such as Facebook.

“Animated GIF Setup”

The animated GIF settings window in the customization tool specifies the setup values for GIFs captured within “The Incredible Booth”, Custom G/S and Classic P.B.O photo booth modes. The settings dictate the length, size and format that the animated GIF’s will be created in within these modes. The Settings specified in this window will not affect operations or settings within the “GIF Booth” mode.

- “Photo width (pixels):” This setting specifies the width of the photos added to the animated GIF. The height of the photos will be calculated automatically in proportion to the width.
- “Photo left offset:” and “Photo top offset:” This setting specifies the position that the photos are added to the GIF.
- “GIF width” and “GIF height:” These settings specify the size of the animated GIF in pixels. If these settings are 0 the GIF will be created to the same size as the photos.
- “Overlays per Photo:” Backgrounds and overlays can be added to the Custom G/s or Custom P.B.O image directories if required. (Please refer to the “Breeze System” 3.6.1 manual for further details on the topic of animated gif overlays.) Default value = 1
- “Image interval:” This setting specifies how long each photo should be displayed for. Values are specified in units of 1/100 sec.
- “Title display time” This setting specifies how long the gif title page should be displayed (if added).
- **Check box** “Display Title at end of animation”: A Gif title image can be added to the animated GIF if required. This option specifies if the GIF title image is displayed before or after the photos.
- **Check Box** “Play GIF in a continuous loop”: This setting enables the animated GIF to be repeated and played in a continuous loop.
- **Check Box** ”Ping Pong” Forward/backwards display: This setting enables the animated GIF to be played in a “Ping Pong” fashion, forwards then backwards.

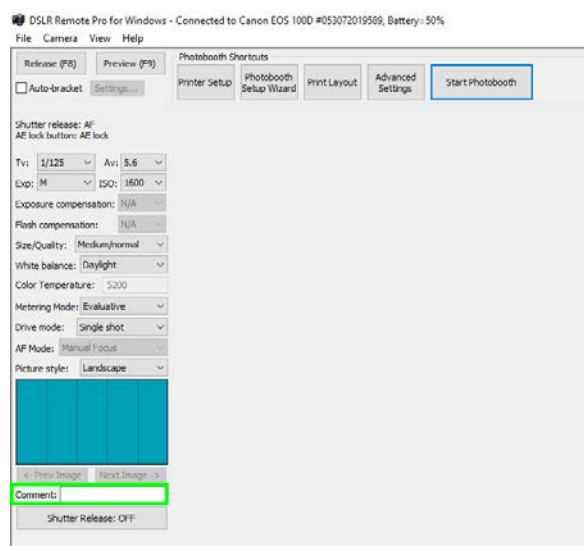
The image shows two overlapping windows from a software application. The background window is titled 'Customisation Tool' and features a red and black checkered pattern. It contains several sections of settings: 'SOCIAL MEDIA SETTINGS.' with options for enabling sharing and setting album names/messages; 'GIF SETTINGS.' with options for creating animated GIFs and selecting setups; 'FONT & CAPTION SETTINGS.' for font selection and token changes; 'CUSTOM OVERLAY'S.' with buttons for different overlay sizes; and 'ADDITIONAL SETTINGS.' for live view, flash mode, camera position, and processing times. The foreground window is titled 'GIF Settings' and has a white background. It contains input fields for 'Photo Width (Pixels)' (set to 600), 'Photo Left offset' (0), 'Photo Top offset' (0), 'GIF width' (0), 'GIF height' (0), 'Overlays per photo' (1), 'Image interval (1/100 sec)' (75), and 'Title display time (1/100 sec)' (150). It also has checkboxes for 'Display Title at end of the animation', 'Play GIF in a continuous loop', 'Ping-pong forward/backwards display', 'Create PNG copies of GIF frames', 'Save Gif in "prints" subfolder', and 'Create MP4 copy of the animated GIF'. There are also fields for 'Minimum duration (secs)' (3), 'Save MP4 in:' (MP4 subfolder), and a 'Change "GIF_title.jpg"' button. An 'Apply Changes' button is at the bottom.

- **Check box** “Create PNG copies of GIF frames”: This setting specifies the creation of PNG copies of the frames/photos capture. This is useful if the frames are to be processed by a 3rd party software. **Warning:** The PNG files created when this option is enabled can be large and may fill up the computer's hard disk.
- **Check box** “Save Gif in prints sub folder”: By default, the animated GIF will be created in a subfolder named “GIF” in the **Breeze Dslr Pro folder** in the main C: drive directory. **This setting should be set to should it be necessary to save the animated GIF in the same folder as the generated prints.**
- **Check box** “Create MP4 copy of animated GIF” This setting specifies to automatically create an MP4 movie file of the animated GIF. This is useful if the animated GIF is to be uploaded to sites such as Facebook.
- “Minimum Duration (secs)”: This setting enables a minimum duration to be set for the animated GIF in secs. Set this to 0 to make the movie as short as possible. This setting is useful if the movie file is to be uploaded to a site which has a minimum length requirement.
- “Save MP4 in”: This setting specifies the location that the MP4 copy of the Gif should be saved.
 - "Same folder as GIF" will save the MP4 file in the same folder as the GIF (either the GIFs subfolder or the prints subfolder depending on the "Save GIF in 'prints' subfolder" setting)
 - "MP4 subfolder" will save the MP4 file in a subfolder named MP4
 - "Prints subfolder" will save the MP4 file the prints subfolder (where the JPEG copies of the prints are also saved)
- “Change ‘GIF’_title.jpg”: This setting allows a GIF_title.jpg image to be added to the animated GIF. If utilized, the customization tool will add the GIF_title.jpg image to “The Incredible Booth” image directories. The image must be in a .jpg format and is recommended to be the same width as the “GIF photo width”, if not it will be resized. Once a GIF_title.jpg image is added to “The Incredible Booth” directories it can simply be overwritten by adding a new image in the same way. Complete removal of the GIF_title.jpg image from file structure is achieved by using the “Default” function.

“Fonts, Captions and Comments Settings”

“Font”

The Font setting enables the global customization of the font and font size to be applied to the final print. As default, a token entitled {comment} is used within the text field box to enable the user to add a desired message or caption to the print by utilizing the “comments” text field within "Breeze Systems" DSLR Remote Pro v3.6.1. This is beneficial to the user as it does not require “The Incredible Booth” software to be re-customised to simply add a small line of text. In addition, the captions and comments are pre-programmed to be added to specific locations on each layout excluding the keyrings layout which is exempt from captions and fonts altogether.



Captions and comments are applied to both “The Incredible Booth” and “Custom G/S” photo booth modes, however captions and comments within P.B.O custom mode will need to be designed into the background.jpg or overlay.png images as the captions function has been disabled within the “P.B.O Custom” mode. This is due to the vast array of template designs that are available from P.B.O. Captions and comments that are added to the “Passport Strips” layout within “The Incredible Booth” and “Custom G/S” photo booth modes will automatically be set **4pts** smaller than the requested font size.

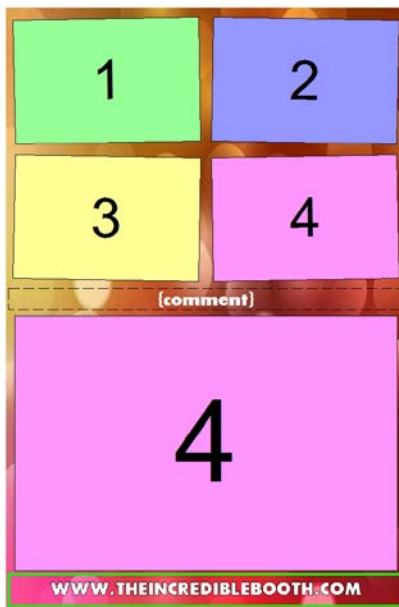
“Custom Overlays”

The custom overlay function enables 5 different custom overlays to be applied throughout “The Incredible Booth” software. Each custom overlay button is specific to an individual layout allowing unique overlays to be designed and applied to respective layouts. The overlay file must be in a .png format and is recommended to be created to the same size as your printer’s resolution. For example,

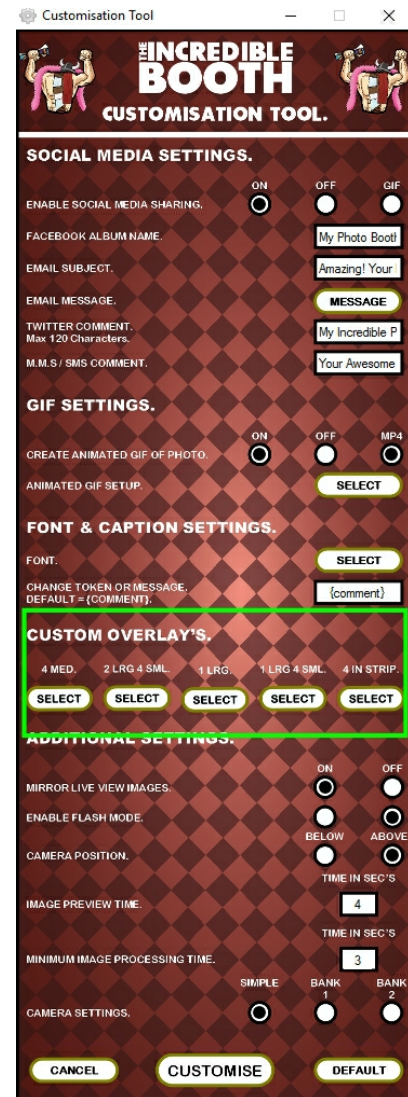
Dnp = 1844 x 1240.

Mitsubishi CP-D70DW = 1864 x 1228.

Custom overlays are applied to “The Incredible Booth” photo booth mode only, “Custom G/s” and “Custom P.B.O” photo booth modes are exempt from this feature as they are specifically designed to be used with “one off” custom designs with custom overlays. Once a custom overlay image has been added to “The Incredible Booth” it can simply be overwritten or replaced by adding a new image in the same way. Complete removal of the image is achieved by using the “Default” function or by adding a blank.png file to each layout.



Custom Overlay applied to a 4 Small 1 Large Print Layout.



“Mirror Live View”

This setting enables the live view image to be mirrored so that the user sees the image in the same way as if they were looking into a mirror. **Warning:** In the event that “Mirror Live View Images” is disabled, the descriptive live view overlays displayed during operation will appear reversed.

“Enable Flash Mode”

Clients using a Rebel series camera (e.g. Canon Rebel T6/EOS 1300D) with a studio strobe connected via the camera's hotshoe using a “hotshoe to PC” sync adaptor will need to select the "External flash mode" setting otherwise the flash won't be triggered when taking photos. If a Canon E-TTL compatible flash or the camera's built-in flash is used the "External flash mode" setting does not need to be enabled.

Please refer to the “**External flash mode and camera settings**” section of the "Breeze Systems" DSLR Remote Pro v3.6.1 user manual for further insight into the use of this setting.

“Camera Position”

This setting adapts “The Incredible Booth” software to suit the individual photo booth setup that the software is to be used with. The setting amends the direction in which the hands point when the “Look At The Camera” screen is displayed.



“Image Preview Time”

This setting modifies “The Incredible Booth” software image preview time. A duration in secs can be specified to determine the length of time to display the preview of the photo (set this to 0 to disable the preview).

“Minimum Image Processing Time”

This setting modifies “The Incredible Booth” software "Minimum duration in **seconds before closing 'processing'** screen. If this setting is set to 0 the 'processing' screen will close as soon as the data has been sent to the printer. The 'processing' screen can be displayed for longer periods by adjusting this value.

“Camera Settings”

This setting specifies the required “Camera Settings” mode to be used within "Breeze Systems" DSLR Remote Pro v3.6.1. If “bank 1” or “bank 2” modes are required for your individual setup, first set the desired “Camera Settings” mode (bank 1 or bank 2) in “The Incredible Booth” customisation tool and customise “The Incredible Booth” software. Once customised it will be necessary to configure the “Camera settings” dialog box within "Breeze Systems" DSLR Remote Pro v3.6.1. This is achieved by using the “Advanced settings” and loading a profile entitled “The Incredible Booth LOAD ME” which is found in the following location; C:\The Incredible Booth

Once loaded, the new mode will be displayed in the "Breeze Systems" DSLR Remote Pro v3.6.1 “Advanced settings” window with a tab entitled “camera settings” displayed to the right of it. Specify the required values for the desired mode in this “camera settings” dialog box and “re-save” the profile. The new “camera settings” will be applied globally across “The Incredible Booth” software once the “The Incredible Booth LOAD ME” profile is re-saved.

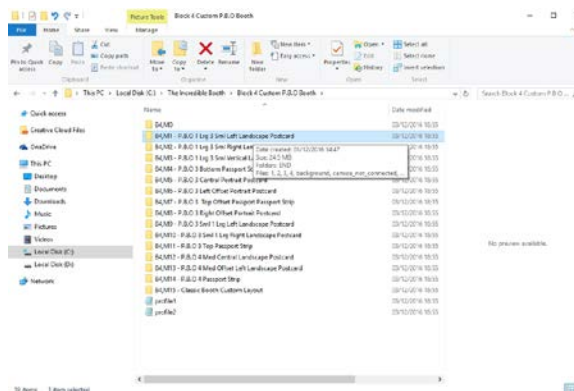
Please refer to the “**camera settings**” section of the "Breeze Systems" DSLR Remote Pro v3.6.1 user manual for further insight and setup information relating to this feature.

Section 6.4 Customizing “Custom G/s” Photo Booth Mode.

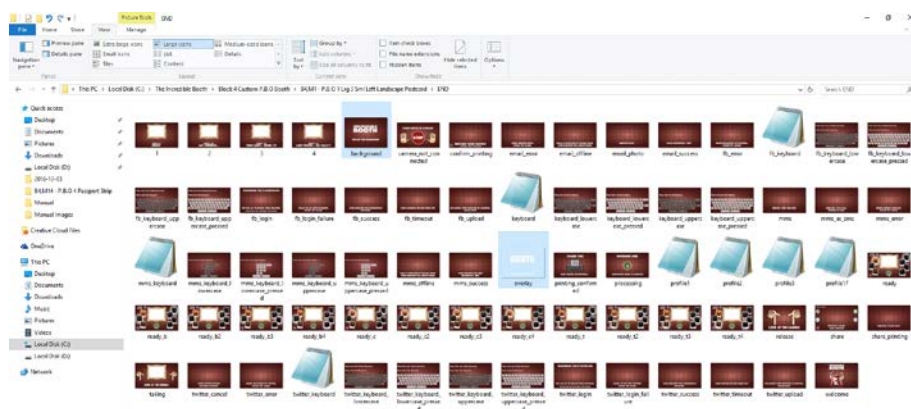
Section 6.4 Customizing “Custom P.B.O Booth” Mode.

The “Custom P.B.O Booth” currently offers 14 layouts option which currently reflect all layouts available from photoboothtemplates.com. These 14 pre-configured layout options offer the advantage of simply adding the required background.jpg and overlay.png image files that were purchased from photoboothtemplates.com to the relevant image directory and instantly creating a ready to go Classic photo booth mode. The “Custom Layout” option also included within this mode offers the flexibility to create a truly unique one off “Classic” (non-green screen) photo booth layout within "Breeze Systems" DSLR Remote Pro v3.6.1 should the need arise.

To add the background.jpg and overlay.png image to “Custom P.B.O Booth” mode. Open “The Incredible Booth” file structure in the host computers main C:/ drive directory. Open the folder entitled “Block 4 Custom P.B.O” and open the folder that specifies your required layout design.



Open the folder entitled “END” within the required layout folder and replace the 2 image files named background.jpg and overlay.png with the 2 new P.B.O image files.



The “Classic Layout” configuration settings are stored in an xml file entitled “Profile4” which is stored in the “Classic Booth Custom Layout” folder inside the “Block 4 Custom P.B.O” folder. The settings can be amended by opening, amending, and re-saving the xml file in "Breeze Systems" DSLR Remote Pro v3.6.1. using address below.

Load “Profile4” by copying and pasteing the following address’s into the “FILE NAME” text box inside the “LOAD” tab dialog box within "Breeze Systems" DSLR Remote Pro v3.6.1 “Advanced settings”

Custom P.B.O “Classic Layout” Booth Settings File

C:\The Incredible Booth\Block 4 Custom P.B.O Booth\B4,M15 - Classic Booth Custom Layout

Section 7 Pop Art Calibration, Customization, and Setup.

The “Pop Art” feature within “The Incredible Booth” reduces the photo and live view to three colours: the background, dark areas of the subject and light areas of the subject. This filter requires a green screen background and works best with continuous lighting rather than flash. The “Pop Art” feature is supplied in a default state and will require a small amount of time to calibrate to your individual photo booth setup, lighting, and requirements.

In order to setup the “Pop Art” feature correctly, ensure the photo booth fully is assembled and lighting correctly calibrated to the green screen. With the camera connected and “The Incredible Booth” loaded, select the “Pop Art” feature within “The Incredible Booth”. The layout screen will be present with the “4 Medium” layout option highlighted. At this point type Ctrl+Shift+C to display the “Pop Art” setup dialog box and follow the following steps;

- Ensure the creative filter selection box is set to “Pop Art”
- Set the threshold to a middle value (e.g. 140)
- Set the sensitivity to a low value (e.g. 6)
- Adjust the background hue slider until the background is replaced with the background colour for the first photo (the default setting is red). A background hue setting of around 80 should be suitable with a green background.
- Finely adjust the threshold and sensitivity sliders to get the desired result.
- The background, low light and highlight colours used for each photo can be changed by clicking on them in the setup dialog box.



The processing of the “Pop Art” in real time for the live view display can put quite a load on the computer which may cause the live view refresh rate to slow down. On a dual or quad core computer, the load can be shared between the processor cores by setting the number of threads to more than 1.

Upon satisfactory completion of the above, make a note of the new values entered including any custom colour changes made and click “Ok” to save. Repeat the above process for the 5 remaining layout options by selecting the layout and typing Ctrl+Shift+C to display the dialog box.

Once all 6 print layouts have been calibrated with the new values, select the “4Medium” layout option again within “Pop Art” and select proceed to move to the next screen (Colours & Copies). Again, type Ctrl+Shift+C to display the “Pop Art” setup dialog box and enter the new values as before and click “Ok” to save. In some instances, it may be necessary to repeat this calibration process for each “Colour & Copy” screen that follows each individual layout within “Pop Art”.

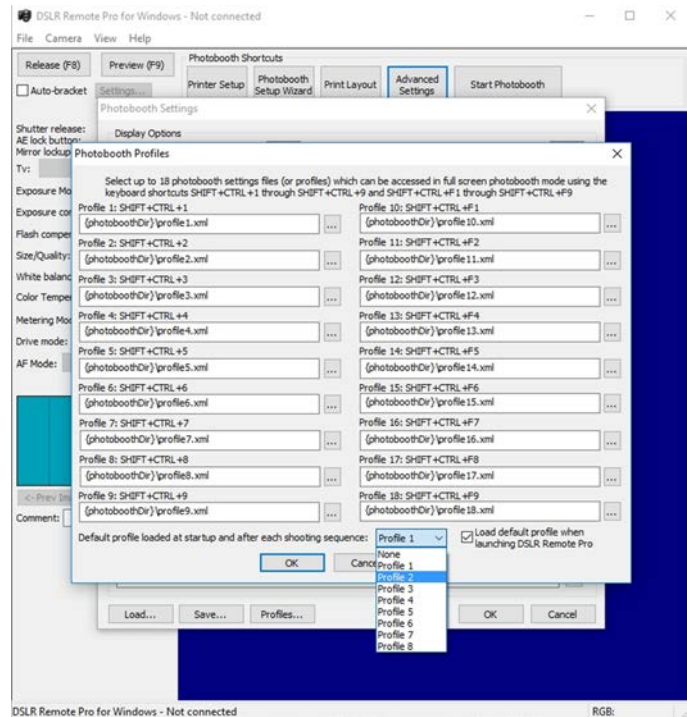
Section 8 “The Incredible Booth” Lock down mode.

“The Incredible Booth” offers clients an amazing array of backgrounds and layout combinations. Whilst this incredible collection is unbelievable, it may not always be necessary. However, it is possible to “Lock Down” The Incredible Booth to a single background and layout choice. To operate “The Incredible Booth” in “Lock Down” mode simply open “Breeze Systems” DSLR Remote Pro v3.6.1 “Advanced settings” and select the tab at the bottom entitled “Profiles”.

With the “Profiles” tab open, select the small dialog box entitled “Default profile loaded at startup and

at the end of each shooting sequence” and select “profile 2”. This will now operate “The Incredible Booth” in “Lock Down” mode. Normal operation of “The Incredible Booth” can be regained by reselecting “Profile 1”. With “Lock Down” mode enabled (profile 2 selected) start and run the photo booth shooting sequence in the normal manor. Select your required background followed by the desired layout and run the photo booth sequence as per normal. At the end of the first photo booth shooting sequence “The Incredible Booth” will enter in to “Lock Down” mode and will circulate within this mode until,

1. An alternative selection is made by using the “Home” button and choosing a new background and layout to operate within “Lockdown” mode.
2. “Breeze Systems” DSLR Remote Pro v3.6.1 is opened and the “Default profile loaded at startup and at the end of each shooting sequence” is reverted back to “Profile 1”.



Section 9 Reprints, Instant Reprints And Reformatting.

Reprints.

In the bottom right hand corner of the "Home" screen is button entitled "Reprint". This " Reprint" button can be accessed at any point to produce an individual reprint from the previous photo booth session. Once the "Reprint" menu has been accessed, a reprint screen is presented with an array of layouts.



For the reprint to be correctly produced, the previous layout must be selected from the reprint screen. Once the layout has been selected press "Reprint". If an alternative layout is required, the "Reformat" function must be used as detailed on the next page of this manual. It is not currently possible to reprint any prints that were compiled prior to the previous session, this can however be accomplished by accessing the photos folder within in the main C: drive of the host computer.



Instant Reprints.

At the end of every photo booth sequence whilst operating in the “The Incredible Booth” mode (excludes “Lock Down” mode) the software will return to the “Home” screen ready for the next session to begin. Providing no theme selections are made within the “Home” screen, a button entitled “Instant” will be available to process an individual reprint immediately. The “Instant” button bypasses the “Reprint” screen and immediately produces a print. The “Instant” button can be used as many times as required and will be active and available until an alternative selection on the “Home” screen is made. Once an alternative selection is made the “Instant” button will be disabled and a “Reprint” button displayed until the end of the next photo booth session.

When operating within the modes of “Custom G/s”, “Custom P.B.O” and “Lock Down” the “Reprint” button displayed on the “Home” screen in the bottom right hand corner operates as an instant reprint function. There is no need to select the required layout.



Reformatting Reprints.

Located at the bottom of the “Colours & Copies” page to the right of the “Proceed” is a button entitled “Reformat”. This function enables the previously captured photos to be “Reformatted” and transformed into alternative theme and layout if required. E.g. In the last photo booth session, the “Las Vegas” theme within “Experiences” was selected and printed in a passport strip layout. The photos captured within this photo booth sequence can now be transferred and reformatted into any background and layout combination (except 1 large) offered within “The Incredible Booth” mode. To reformat, select an alternative background followed by a new layout and select “reformat”. The photos from the previous photo booth sequence will now be reconfigured and printed in the newly selected format.



Note: The reformat function has been disabled from the "1 large" layout screen. Additionally, if the previous session was captured within this layout, it is not possible to reformat to an alternative format. For obvious reasons, you cannot reformat a single photo in to a layout which has 4 photos.

Section 10 Un-installation of "THE INCREDIBLE BOOTH".

In the event that "THE INCREDIBLE BOOTH" software is no longer required, or alternatively the intention is to re-commission the software on to an alternative computer, the following procedure will apply.

In order to de-activate the unique licensing key, it will be necessary to use "THE INCREDIBLE BOOTH" un-installer tool which is supplied as part of "THE INCREDIBLE BOOTH" software. "THE INCREDIBLE BOOTH" un-installation tool can be accessed from either the apps section of the "Start" menu on the host computer, or within "The Incredible Booth" programs folder located in the "Programs (x86) folder within the main C: drive directory.

"THE INCREDIBLE BOOTH" un-installation tool will not only ensure the reactivation of the unique license key (which will be required upon reinstallation of the software), it will ensure the successful removal off all folders and files which were installed initially with the exception to this is folder entitled "Breeze Dslr Pro", this folder is not un-installed and is left in its current state in the main C: drive directory. The un-installer will not remove this folder as it may contain client's photos / logs and other data that may well wish to be retained for future reference. This folder can be manually deleted at the discretion of the client should it no longer required.

Un-installation of "Breeze Systems" DSLR Remote Pro v 3.6.1

Should the removal and de-commissioning of "BREEZE SYSTEMS" DSLR Remote Pro v 3.6.1 be required, please refer to the "Breeze Systems" DSLR Remote Pro v3.6.1 manuals for the relevant information on un-installation.